

MANIFEST CREATOR AD-ON TO JMRI

TABLE OF CONTENTS:

1. [DISCLAIMER](#)
2. [HISTORY](#)
3. [INTRODUCTION](#)
4. [FUNCTIONS AND FEATURES](#)
5. [WELCOME - THE MAIN MENU](#)
6. [CREATE MANIFEST - MANUAL](#)
7. [MANIFEST PREFERENCES](#)

| | |
|-----------------------------------|--|
| <u>SECTION 1:</u> | <u>VERSION AND RELEASE DATE</u> |
| <u>SECTION 2:</u> | <u>COLOR CHART</u> |
| <u>SECTION 3:</u> | <u>TEXT AND FILL COLOR</u> |
| | <u>AREA 1: PICKUPS AND SETOUTS</u> |
| | <u>AREA 2: FORM ELEMENTS</u> |
| | <u>AREA 3: MISCELLANEOUS</u> |
| <u>SECTION 4:</u> | <u>OUTPUT OPTIONS</u> |

8. [PICKUPS/SETOUTS MANIFEST NAMES](#)
9. [MANIFEST LOGO](#)
10. [RESET MANIFEST FORM](#)
11. [EXIT PROGRAM](#)
12. [FILES LOCATION AND PRINTERS SCREEN](#)
13. [CREATE MANIFEST - JMRI AUTO LINK](#)
14. [IN CLOSING](#)
15. [APPENDIX A: DEFAULT PREFERENCES EXAMPLE](#)
16. [APPENDIX B: COLOR PREFERENCES EXAMPLES](#)
17. [APPENDIX C: OUTPUT PREFERENCES EXAMPLES](#)
18. [APPENDIX D: LOGO SELECTION EXAMPLES](#)
19. [APPENDIX E: ADDITIONAL USER SUGGESTED MANIFEST FORMAT](#)

[DISCLAIMER](#) [\(Return\)](#)

Manifest Creator (MC) is an add-on application that can be used with output generated from JMRI Operations Train Build feature. This application is written using Visual Basic for Applications (VBA) within Microsoft Excel and originally ran on the Windows (only) Platform. Thanks to "*Dave Heap*" it now will also run on the MAC Platform. MC is NOT part of JMRI, but is used in conjunction with JMRI. The basic function of MC is to produced a more formally formatted manifest that can be used in place of the manifests that are generated by JMRI.

NOTE: With recent changes this App no longer functions properly within the MAC version. If someone cares to try and figure out just what is wrong, that would be great. I do not have access to a MAC and Office for the MAC. (06/13/15).

Train Manifest - 4 - October 31, 2012 8:30 AM

Pine Bluff Operations Test

Manifest for train (A2F)
Valid 10/31/2012 08:17

Scheduled work at ABLE, departure time 00:00
Location Comment for ABLE - This is where the new LC should show up.
[] Pick up AA R129 Reefer 40' Black E from A-D
[] Pick up AA F019 Flatcar 40' Black L (Hazardous) from A-G
[] Pick up AA F015 Flatcar 40' Black E (Hazardous) from A-G
[] Pick up AA T051 Tank Oil 40' Black E from A-A
[] Pick up AA T059 Tank Oil 40' Black L from A-D
Train departs ABLE Westbound with 2 Loads, 3 Empties, 220 feet, 225 tons

Scheduled work at BAKER, estimated arrival time 00:04
[] Set out AA R129 Reefer 40' Black E to BB
[] Set out AA F019 Flatcar 40' Black L (Hazardous) to BB
[] Set out AA F015 Flatcar 40' Black E (Hazardous) to BC InterChange
Train departs BAKER Westbound with 1 Load, 1 Empty, 88 feet, 100 tons

No work at CHARLIE
No work at DODGE

Scheduled work at EAGLE, estimated arrival time 00:25
[] Pick up AA R148 Reefer 40' Black L from EB
This is a Car comment and I do not know what it will look like in the file
[] Pick up AA X178 Bocar 40' Black E from EC
[] Set out AA T051 Tank Oil 40' Black E to ED
Train departs EAGLE Westbound with 2 Loads, 1 Empty, 132 feet, 132 tons

Scheduled work at FOX, estimated arrival time 00:38
[] Pick up AA X111 Bocar 40' Black E from FC
[] Pick up AA R031 Reefer 40' Black E from FA
This is a Car comment and I do not know what it will look like in the file
[] Pick up AA F017 Flatcar 40' Black L (Hazardous) from FA
[] Set out AA T059 Tank Oil 40' Black L to FA
Train departs FOX Westbound with 2 Loads, 3 Empties, 220 feet, 173 tons

No work at HAGLE
No work at DODGE
No work at CHARLIE
No work at BAKER

Scheduled work at ABLE, estimated arrival time 01:10
Location Comment for ABLE - This is where the new LC should show up.
[] Set out AA X111 Bocar 40' Black E to A-B
[] Set out AA R031 Reefer 40' Black E to A-C
This is a Car comment and I do not know what it will look like in the file
[] Set out AA R148 Reefer 40' Black L to A-E
This is a Car comment and I do not know what it will look like in the file

| "Pine Bluff Operations Test" | | | | | | | | | |
|--|----------|------|--|------------------------|----------------|------|--|--|--|
| Manifest for A2F | | | | | | | | | |
| Valid on 10/31/2012 08:17 | | | | | | | | | |
| Scheduled work in ABLE - and departs at 00:00 | | | | | | | | | |
| Location Comment for ABLE - This is where the new LC should show up? | | | | | | | | | |
| PICKUPS | | | | | SETOUTS | | | | |
| CAR | LOCATION | LOAD | | CAR | LOCATION | LOAD | | | |
| AA R129 Reefer Black | A-D | E | | | | | | | |
| AA F019 Flatcar Black | A-G | L | | | | | | | |
| AA F015 Flatcar Black | A-G | E | | | | | | | |
| AA T051 Tank Oil Black | A-A | E | | | | | | | |
| AA T059 Tank Oil Black | A-D | L | | | | | | | |
| UNHAZARDOUS! | | | | | | | | | |
| Train departs ABLE traveling West with 5 cars (2 Loads, 3 Empties), 220 feet, 225 tons - Departure Time is 00:00 | | | | | | | | | |
| Scheduled work in BAKER - Train arrives at 00:04 and departs at 00:13 | | | | | | | | | |
| PICKUPS | | | | | SETOUTS | | | | |
| CAR | LOCATION | LOAD | | CAR | LOCATION | LOAD | | | |
| | | | | AA R129 Reefer Black | BB | E | | | |
| | | | | AA F019 Flatcar Black | BB | L | | | |
| | | | | AA F015 Flatcar Black | BC InterChange | E | | | |
| UNHAZARDOUS! | | | | | | | | | |
| Train departs BAKER traveling West with 2 cars (1 Load, 1 Empty), 88 feet, 100 tons - Departure Time is 00:13 | | | | | | | | | |
| The following town(s) have No Work | | | | | | | | | |
| Train passes CHARLIE at 00:17 | | | | | | | | | |
| Train passes DODGE at 00:21 | | | | | | | | | |
| Scheduled work in EAGLE - Train arrives at 00:25 and departs at 00:34 | | | | | | | | | |
| PICKUPS | | | | | SETOUTS | | | | |
| CAR | LOCATION | LOAD | | CAR | LOCATION | LOAD | | | |
| AA R148 Reefer Black | EB | L | | AA T051 Tank Oil Black | ED | E | | | |
| AA X178 Bocar Black | EC | E | | | | | | | |
| This is a Car comment and I do not know what it will look like in the file | | | | | | | | | |
| Train departs EAGLE traveling West with 3 cars (2 Loads, 1 Empty), 132 feet, 132 tons - Departure Time is 00:34 | | | | | | | | | |
| Scheduled work in FOX - Train arrives at 00:38 and departs at 00:50 | | | | | | | | | |
| PICKUPS | | | | | SETOUTS | | | | |
| CAR | LOCATION | LOAD | | CAR | LOCATION | LOAD | | | |
| AA X111 Bocar Black | FC | E | | AA T059 Tank Oil Black | FA | L | | | |
| AA R031 Reefer Black | FA | E | | | | | | | |
| AA F017 Flatcar Black | FA | L | | | | | | | |
| This is a Car comment and I do not know what it will look like in the file | | | | | | | | | |
| UNHAZARDOUS! | | | | | | | | | |
| Train departs FOX traveling West with 5 cars (2 Loads, 3 Empties), 220 feet, 173 tons - Departure Time is 00:50 | | | | | | | | | |
| The following town(s) have No Work | | | | | | | | | |
| Train passes EAGLE at 00:54 | | | | | | | | | |
| Train passes DODGE at 00:58 | | | | | | | | | |
| Train passes CHARLIE at 01:02 | | | | | | | | | |
| Train passes BAKER at 01:06 | | | | | | | | | |
| Scheduled work in ABLE - Train arrives at 01:10 and terminates at 01:25 | | | | | | | | | |
| Location Comment for ABLE - This is where the new LC should show up? | | | | | | | | | |
| PICKUPS | | | | | SETOUTS | | | | |
| CAR | LOCATION | LOAD | | CAR | LOCATION | LOAD | | | |
| | | | | AA X111 Bocar Black | A-B | E | | | |
| | | | | AA R031 Reefer Black | A-C | E | | | |
| | | | | AA R148 Reefer Black | A-E | L | | | |
| | | | | AA X178 Bocar Black | A-F | E | | | |
| | | | | AA F017 Flatcar Black | A-G | L | | | |
| This is a Car comment and I do not know what it will look like in the file | | | | | | | | | |
| UNHAZARDOUS! | | | | | | | | | |
| Train terminates at ABLE | | | | | | | | | |
| Created with Manifest Creator Version 2.0 as of 10/11/12 | | | | | | | | | |

Sample Manifests - JMIRI & Manifest Creator

Having explained all that is found above, it is understood that there is a somewhat limited

set of users that can take advantage of this application. MC has been tested and run using Excel 2000, Excel 2003, Excel 2010 and Excel 2013 although it requires the program be saved in Office 2007 or above format. Not to worry these are available as well as the version that runs on older versions of Excel. If you have Excel 2007, 2010 or 2013 you can use this version. However, you only need to use it if you are running Excel 2013. It will run in Excel 2007 but special steps need to be taken if one wants to use their own personal logo feature. ***It will also run on several versions of Excel running on the MAC OS. I believe that Excel 8 on MAC has the same issues with logo placement as Excel 2007 on Windows. (This is currently not true. The App will NOT run on the MAC platform at all.)*** Send any comments or questions as to why it will run in some but not all of the Excel versions to Bill Gates please.

Additional information may be found in the file MC4JMRIVerN.NInfo.txt that accompanies each release of MC. This file and the other files required for each release of Manifest Creator can be found in their own page within this Website.

As stated above, there are two Excel versions of the App depending on what level of Excel you are using. The Table below describes this situation.

| | | |
|----|--------------|---|
| 1. | MC4JMRI.xls | Excel 2000 Excel 2007 Excel 2010 |
| 2. | MC4JMRI.xlsm | Excel 2007 (Optional) Excel 2010 (Optional) Excel 2013 (Mandatory) |

HISTORY [\(Return\)](#)

The creation of MC came about via a very circuitous route. It all began when I was asked to an Operating Session at Bill Zastro's layout in Clare, Michigan. I was very new to operations in general but knew that I wanted to hold Operating Sessions in my then under construction layout. Bill used clipboards and hand drawn manifests. The orders on these manifests were also generated by hand and entered into the photocopied manifests. Being rather handy in the use of Microsoft Excel for generating forms, I felt that I could improve the hand designed manifest that Bill was using. I wanted to do this as a thank-you for attending the operating session. I was able to do this and the first version of MC was born. However, this was just a computer generated version of what Bill had done with paper and pencil. The orders on these manifests still were done by hand, not only the entering of the data but figuring what cars went where.

About this time I stumbled into JMRI Operations. I had been looking at Ship-It but the initial learning curve seemed very steep, the software seemed pricey, and I just wasn't sure if it would do what I wanted. After looking at JMRI Operations, I found that to begin with very rudimentary operations, the learning curve was almost non-existent. At the same time I felt that at the rudimentary level, these computer generated orders would be an improvement to doing them by hand. So I thought I would share this information with Bill as well.

I soon found that the original manifest that I had created using Excel would not function with the data generated by JMRI. So in the beginning, I reformatted the original Excel manifest and attempted to use the text output that was used to print the manifests in JMRI. Soon I began having discussions with Dan Boudreau and we decided that things would be much easier for MC if Dan were to output a CSV formatted file.

This was the beginning of what we have now. Having a CSV formatted file made the parsing process in Excel VBA, that was required, much easier than just reading the raw text file. So having started with Excel, it just seemed natural that I would use Visual Basic for Applications (VBA) within Excel, since I was only doing this for my friend Bill. There were several conversations on what items would be appropriate in the CSV file and Dan Boudreau finally came up with what we all have now. (See JMRI Operations documentation for details.) After a bit of work, I thought that this format and parsing of the CSV file might be of interest to others using JMRI. At this point I was unaware that so many JMRI users were non-PC/Windows users but since we have found there are many that are not running on this platform. But the die had been cast.

My initial release was announced via the JMRI User Group and I found that there were some users that were interested in what Manifest Creator could do for them. The program has grown over the past years, mainly based upon user input which has been invaluable. Thank you to all that have contributed ideas. And a big THANK YOU to Dan Boudreau for all that he has done to make the MC workable. I also need to take time to recognize "*Inspector Dave*" as he was instrumental in establishing the link between JMRI and MC. There have been many many others that have contributed great ideas and I thank you all!

NOTE: It is interesting that the original Excel formatted manifest was never used for an actual operating session by Bill, and since then Bill has retired from the hobby. But I still thank him as he was the catalyst to the creation of the Manifest Creator. Thank you Bill Zastro!

INTRODUCTION [\(Return\)](#)

This application uses a CSV output file from JMRI. To use MC you must use a version of JMRI that allows the creation of CSV files as the output of JMRI Train Builds. The CSV output option is available in the JMRI Releases beginning with Version 2.12. MC uses this CSV file to generate a formatted manifest. Various examples have been stored or displayed on pages within this website. Others are shown in Appendix A, B, C, and D at the end of this document.

There are several files that are part of each release of MC. Only one of these files is used to create the manifest, while the others are documentation or sample manifests created with the specific Release or Version. When the screens were first created, a rather obscure font, AR JULIAN, was used. Although not absolutely necessary, it is strongly suggested that you install this font. The font file is included with other files that make up a MC Release. Refer to the instructions for your version of Windows or MAC for the font installation process.

FUNCTIONS AND FEATURES [\(Return\)](#)

MC began as a very minor application that simply formatted JMRI Train Build data from the CSV file into a more formalized manifest. Since then, thanks to input from many users, it has grown to have a significant number of functions and features also known as Preferences. As of Version 4.2, these Preferences have been expanded yet again to those listed below. Some of these will be explained in detail within its own section. Below is a list of Preferences that are available with the most recent version of MC.

Preferences

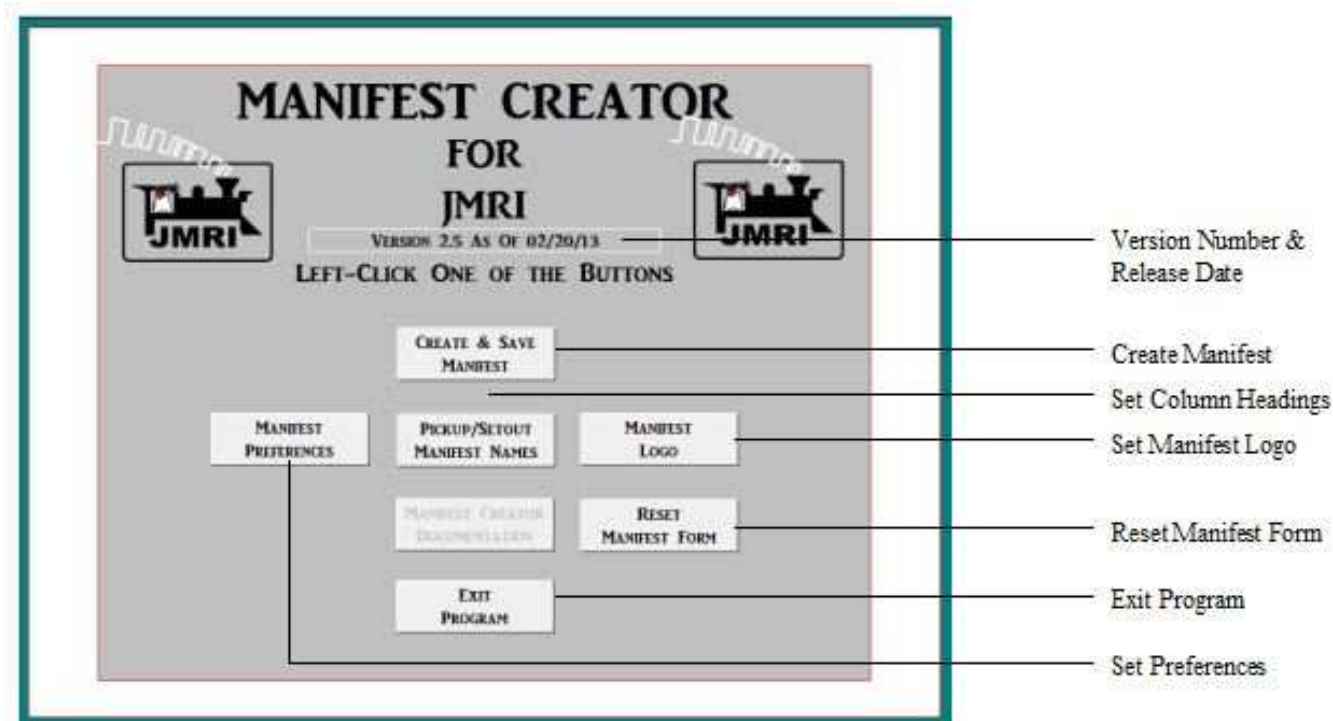
1. User Logo on Manifest Header
2. Each Location separated from others

3. **Pickups and Setouts side by side to reduce length of Manifest**
4. **Pickup Blocking**
5. **Print Comments Yes/No**
6. **Print Extended Car Comments (after the -) Yes/No**
7. **Print Extended Track Comments (after the -) Yes/No**
8. **Print Page Headings (other than first page) Yes/No**
9. **Print Loads or just "L" or "E"**
10. **Print Multi-Line Comments**
11. **Set Page Breaks Yes/No**
12. **Include Times Yes/No**
13. **Set Lines per Page**
14. **User selectable Column Titles for PICKUPS and SETOUTS**
15. **Print MOVE Pickups and Setouts Side by Side**
16. **User Selectable Colors for the following:**
 - Pickup Car
 - Pickup Car Comment
 - Pickup Car Hazardous
 - Pickup Car Caboose / FRED
 - Pickup Car Caboose / FRED Comment
 - Pickup Loco
 - Pickup Loco Comment
 - Add Helper
 - Pickup Section Headings
 - Setout Car
 - Setout Car Comment
 - Setout Car Hazardous
 - Setout Car Caboose / FRED
 - Setout Car Caboose / FRED Comment
 - Setout Loco
 - Setout Loco Comment
 - Remove Helper
 - Setout Section Headings
 - Manifest Headings
 - Boarder Areas
 - Location Comments
 - Change Logo/Caboose/FRED
 - Blocking
 - Route Comment
 - Move Indicator
 - No Work Locations
17. **Direct Link from JMRI**
18. **User Selectable Printers by Train**
19. **Pickup Blocking**
20. **Fixed Width Font Yes/No**
 - And several more.

Each of these Preferences is set and stored on the Preferences Sheet and is reachable from the MC Welcome Screen.

WELCOME - THE MAIN MENU [\(Return\)](#)

The Welcome Screen or Main Menu controls all of the capabilities of MC. You simply click on a Button of your choice. The one you will use to build a manifest is [Create & Save Manifest]. Let's start with a manifest using the default Preferences. We will quickly get to describing these Preferences so that you may tailor the manifest to your liking.



[Need an updated screen print.]

CREATE MANIFEST - MANUAL [\(Return\)](#)



This selection on the Welcome Screen allows you to generate a manifest from any CSV file that is generated from JMRI Train Build. MC will ask for the name of the CSV file that you would like to process. This is done through the normal Windows Open File dialog box. MC remembers where your files are located and will show all .csv files in the directory. Once you see the file that you would like to process, highlight it and click Open, or double click the file name. MC goes to work and will then generate your manifest. This manifest will optionally be displayed in Excel's Print Preview, and/or printed to your default printer, and/or create .xls(m) file with the same name as the CSV file you selected above. What MC does with the completed manifest is totally controlled by the Output Preferences discussed in the following section. It is possible, by setting Preferences in a certain way, to end up with no manifest. So be a bit careful when setting these Preferences.

IMPORTANT NOTE: Print Preview does not function properly in Excel 2013 (.xlsm). The problem is known but a solution has yet to be found.

If you do receive a preview of the manifest, you should not print the manifest using the Print (icon) option within this window. You should always select the Close (Icon) to exit Print

Preview. If you do want hardcopy print you need to set the appropriate Preference to YES. If you have set your Preferences so that you ask for a file to be created, MC will create the manifest file and save it to the same directory as your input file directory. When MC has finished performing the necessary actions, based upon your Preferences, it returns to the Welcome Screen awaiting your next command. If you asked MC to create a manifest file and wish to locate the manifest later, it has the same name as the CSV Input file but has an extension of .xls (Excel). This file will remain here (same directory as your input CSV file) until your next build for this particular train. This is the very basic operation of MC. It is quick and easy to do and generates formatted manifest as shown in Appendix A Default Preferences Example at the end of this document. To make things really interesting change some of the Preferences described below.

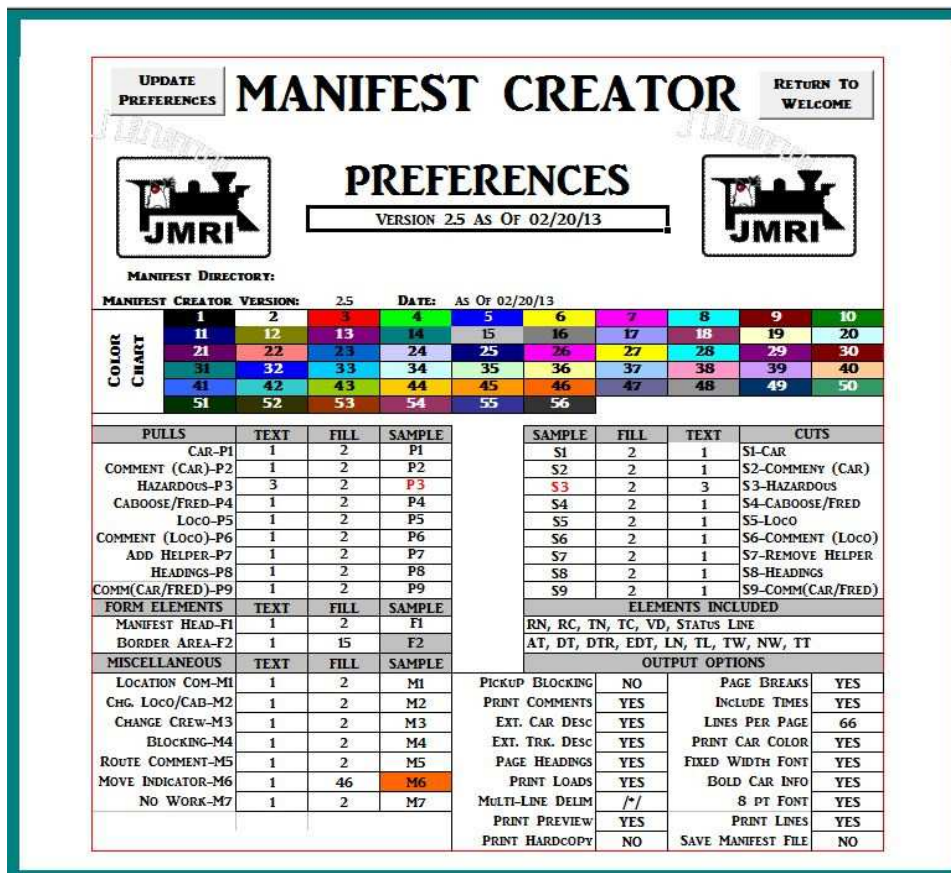
NOTE: If you have yet to generate a manifest in CSV format from JMRI, you should review it's documentation so that you have it's options set properly. It would be a good idea to make sure that you have everything working from the JMRI side and then attempt your first MC manifest.

MANIFEST PREFERENCES [\(Return\)](#)



Lets discuss so as to understand the various Preferences that are available for modifying the generated manifest output. All Preferences are found on the Preferences Worksheet (Tab) in the MC Excel Workbook [MC4JMRI.xls]. Click on the [Manifest Preferences] button on the Welcome Screen to reach this page. The following form will be displayed.

NOTE: You can ONLY modify Preferences using MC in Manual Mode.



(We need a new screen

shot here)

There are four (4) sections within this form.

SECTION 1: [\(Return\)](#)

MANIFEST CREATOR VERSION: 2.5 DATE: AS Of 02/20/13 (We need a new screen shot here)

The first section is used to track MC Version and Release Date information. The program keeps track of certain information here for use in generating the manifest.

SECTION 2: [\(Return\)](#)

| | | | | | | | | | | |
|-------------|----|----|----|----|----|----|----|----|----|----|
| COLOR CHART | 1 | 2 | 3 | 4 | 5 | 6 | 7 | 8 | 9 | 10 |
| | 11 | 12 | 13 | 14 | 15 | 16 | 17 | 18 | 19 | 20 |
| | 21 | 22 | 23 | 24 | 25 | 26 | 27 | 28 | 29 | 30 |
| | 31 | 32 | 33 | 34 | 35 | 36 | 37 | 38 | 39 | 40 |
| | 41 | 42 | 43 | 44 | 45 | 46 | 47 | 48 | 49 | 50 |
| | 51 | 52 | 53 | 54 | 55 | 56 | | | | |

This section is the Color Chart. This is used as a guide if you decide to modify any of the Color Preferences. This chart may be confusing at first. In this Chart, the number of the color is in either black or white while the actual color is the fill color surrounding the number. So number 1 is black, 2 is white, 3 is red, ... ,. These colors are used to set the Text Color and the Fill Color of the various available Color Preferences. This will be explained below.

SECTION 3: [\(Return\)](#)

This section is used to set the Text Color and Fill Color for various types of records found in the CSV file. Remember: The Color Table above the Code Listing is provided so that you may pick the appropriate color number to select the desired color. The two values you will be

setting are the Text Color and the Fill Color.

This section contains three areas.

The first area deals with PICKUPS and SETOUTS (or PULLS and CUTS - Preference setting).

[\(Return\)](#)

| PULLS | TEXT | FILL | SAMPLE |
|-------------------|------|------|--------|
| CAR-P1 | 1 | 2 | P1 |
| COMMENT (CAR)-P2 | 1 | 2 | P2 |
| HAZARDOUS-P3 | 3 | 2 | P3 |
| CABOOSE/FRED-P4 | 1 | 2 | P4 |
| Loco-P5 | 1 | 2 | P5 |
| COMMENT (Loco)-P6 | 1 | 2 | P6 |
| ADD HELPER-P7 | 1 | 2 | P7 |
| HEADINGS-P8 | 1 | 2 | P8 |
| COMM(CAR/FRED)-P9 | 1 | 2 | P9 |
| FORM ELEMENTS | TEXT | FILL | SAMPLE |

| SAMPLE | FILL | TEXT | CUTS |
|-------------------|------|------|-------------------|
| S1 | 2 | 1 | S1-CAR |
| S2 | 2 | 1 | S2-COMMENY (CAR) |
| S3 | 2 | 3 | S3-HAZARDOUS |
| S4 | 2 | 1 | S4-CABOOSE/FRED |
| S5 | 2 | 1 | S5-LOCO |
| S6 | 2 | 1 | S6-COMMENT (Loco) |
| S7 | 2 | 1 | S7-REMOVE HELPER |
| S8 | 2 | 1 | S8-HEADINGS |
| S9 | 2 | 1 | S9-COMM(CAR/FRED) |
| ELEMENTS INCLUDED | | | |

If we look at the third line under PICKUPS (PULLS in this screen shot above) you will see the following:

Hazardous-P3 | 3 | 2 | P3

Hazardous is the Preference, P3 is the code that is displayed in the Sample area, 3 is the number of the Text Color, 2 is the number of the Fill Color, and the P3 shows what the output will look like. In this case all Pickup Hazardous Cars will print with Red Text and White Fill. (Text=3=Red, Fill=2=White). (The P is used to indicate PICKUP) Currently the same colors are set for Setouts but they could be different. You change these color settings by simply entering the Text Color Number value and the Fill Color Number value in the appropriate cell. The change in the corresponding Sample Cell will not be changed until you click on the [Update Preferences] Button at the top left of the screen. You may enter all changes at one time and then review the sample by clicking on the [Update Preferences] Button or you made do them one at a time. After you become familiar with changing these Preferences you may not need to see the sample. If you click the [Return To Welcome] Button at the top right of the screen, the Preferences will be updated and you will be returned to the Welcome Screen.

Feel free to play with these color settings. However, it is possible to set the same Text and Fill Color. I doubt if you would want to do this as the Text will blend in with the Fill making the Text unreadable. You can print some very colorful manifest by modifying these Text and Fill colors. Refer to Appendix B: Color Preferences Examples at the end of this document. NOTE: When changing any Preference you must exit the cell in which you made the change. You can do this by using the Tab Key or the Enter Key. If you do not do this, the Preference will not be changed as Excel does not update the cell until you move to another cell. MC comes with these Color Preferences pre-set. Theses 'default' values are show below. The 'P' is used to denote Pickups and the 'S' to denote Setouts.

| PICKUP/PULL | DEFAULT SETTING | SETOUT/CUT | DEFAULT SETTING |
|-------------------|-----------------|-------------------|-----------------|
| Car-P1 | Text=1 Fill = 2 | Car-S1 | Fill = 2 Text=1 |
| Comment (Car)-P2 | Text=1 Fill = 2 | Comment (Car)-S2 | Fill = 2 Text=1 |
| Hazardous-P3 | Text=3 Fill = 2 | Hazardous-S3 | Fill = 2 Text=3 |
| Caboose/FRED-P4 | Text=1 Fill = 2 | Caboose/FRED-S4 | Fill = 2 Text=1 |
| Loco-P5 | Text=1 Fill = 2 | Loco-S5 | Fill = 2 Text=1 |
| Comment (Loco)-P6 | Text=1 Fill = 2 | Comment (Loco)-S6 | Fill = 2 Text=1 |
| Add Helper-P7 | Text=1 Fill = 2 | Add Helper-S7 | Fill = 2 Text=1 |
| Headings-P8 | Text=1 Fill = 2 | Headings-S8 | Fill = 2 Text=1 |

| | | | |
|----------------------------------|------------------------|----------------------------------|------------------------|
| Comment (Cab/FRED)-P9 | Text=1 Fill = 2 | Comment (Cab/FRED)-S9 | Fill = 2 Text=1 |
|----------------------------------|------------------------|----------------------------------|------------------------|

NOTE: Be careful when setting the SETOUT Colors as for some reason I decided to reverse the Test and Fill Colors columns. Seemed like a good idea at the time.

The second area within Section 3 is **FORM ELEMENTS** which allows you to change colors of the various parts of the form. [\(Return\)](#)

| FORM ELEMENTS | TEXT | FILL | SAMPLE |
|------------------|------|------|--------|
| MANIFEST HEAD-F1 | 1 | 2 | F1 |
| BORDER AREA-F2 | 1 | 15 | F2 |

| ELEMENTS INCLUDED |
|--------------------------------------|
| RN, RC, TN, TC, VD, STATUS LINE |
| AT, DT, DTR, EDT, LN, TL, TW, NW, TT |

As you can see in the Preferences Screen above, the Border Area is currently set to Text=1=Black Fill=15=Grey. You will then see a sample of the color combination. The **ELEMENTS INCLUDED** shown to the right of the **FORM ELEMENTS** indicates which of the Record Types in the CSV file will be controlled by this code. One line is for the Manifest Head-F1 and the other is for the Border Area-F2. (The F is used to indicate FORM)

It is up to you how you set these Options. They do make a significant difference in the output generated by MC. Refer to Appendix B: Color Preferences Examples at the end of this document. MC comes with these Form Element Preferences pre-set. These 'default' values are show below.

| FORM ELEMENTS | DEFAULT SETTING | ELEMENTS INCLUDED |
|-----------------|------------------|--------------------------------------|
| Manifest Header | Text=1 Fill = 2 | RN, RC, TN, TC, VD, Status Line |
| Border Area | Text=1 Fill = 15 | AT, DT, DTR, EDT, LN, TL, TW, NW, TT |

The third area within Section 3 is **MISCELLANEOUS**, which allows you to change colors of miscellaneous items. There are seven (7) different Preferences that may be set in this area.

| MISCELLANEOUS | TEXT | FILL | SAMPLE |
|-------------------|------|------|--------|
| LOCATION COM-M1 | 1 | 2 | M1 |
| CHG. LOCO/CAB-M2 | 1 | 2 | M2 |
| CHANGE CREW-M3 | 1 | 2 | M3 |
| BLOCKING-M4 | 1 | 2 | M4 |
| ROUTE COMMENT-M5 | 1 | 2 | M5 |
| MOVE INDICATOR-M6 | 1 | 2 | M6 |
| NO WORK-M7 | 1 | 2 | M7 |

Look at the line near the bottom of the Code List found in the **MISCELLANEOUS** area. It is as follows:

Move Indicator-M6 | 46 | 2 | M6

Move Indicator is the Preference, M6 is the code that is displayed in the Sample area, 46 is the Text Color, 2 is the Fill Color, and M6 is a Sample of this section of the manifest will look like. In this case all MOVE Cars will print with Orange (or whatever) Text and White Fill. (Text=46=Orange, Fill=2=White) (The M is used to indicate MISCELLANEOUS)

It is up to you how you set these Options. They do make a significant difference in the output generated by MC. Refer to Appendix B: Color Preferences Examples at the end of this document. MC comes with these Form Element Preferences pre-set. These 'default' values are show below.

| PREFERENCE | DEFAULT SETTINGS |
|------------------------|------------------|
| Location Comment-M1 | Text=1 Fill = 2 |
| Change Loco/Caboose-M2 | Text=1 Fill = 2 |
| Change Crew-M3 | Text=1 Fill = 2 |
| Blocking-M4 | Text=1 Fill = 2 |
| Route Comment-M5 | Text=1 Fill = 2 |
| Movie Indicator-M6 | Text=46 Fill = 2 |
| No Work-M7 | Text=1 Fill = 2 |

SECTION 4: [\(Return\)](#)

This section deals with **OUTPUT OPTIONS** and is the most recent addition to Preferences.

| OUTPUT OPTIONS | | | |
|------------------|-----|--------------------|-----|
| PICKUP BLOCKING | YES | PAGE BREAKS | YES |
| PRINT COMMENTS | YES | INCLUDE TIMES | YES |
| EXT. CAR DESC | YES | LINES PER PAGE | 66 |
| EXT. TRK. DESC | YES | PRINT CAR COLOR | YES |
| PAGE HEADINGS | YES | FIXED WIDTH FONT | YES |
| PRINT LOADS | YES | BOLD CAR INFO | YES |
| MULTI-LINE DELIM | / | 8 PT FONT | YES |
| PRINT PREVIEW | YES | PRINT LINES | YES |
| PRINT HARDCOPY | NO | SAVE MANIFEST FILE | NO |
| PRINT CREW LINE | NO | | |

Many of these settings are YES or NO. Let's just look at a couple. The first one:

Pickup Blocking YES

Pickup Blocking is the Preference, YES is the current setting. This indicates that the manifest will include the Destination Location and Track so that when PICKingUP Cars one may Block them for easy SETtingOUT upon arrival at their destination. If you change this Preference to NO, this Blocking information will not be included on the manifest. See the manifest 'snippet' below.

| Scheduled work in ABLE - and departs at 00:00 | | | | | |
|--|----------|------|--------------|----------------------|------|
| "Location Comment for ABLE - This is where the new LC should show up." | | | | | |
| PICKUPS | | | SETOUTS | | |
| CAR | LOCATION | LOAD | CAR | LOCATION | LOAD |
| AA R129 Reefer Black | A-D | E | Blocking ... | BAKER-BB | |
| [H] AA F019 Flatcar Black | A-G | L | Blocking ... | BAKER-BB | |
| [H] AA F015 Flatcar Black | A-G | E | Blocking ... | BAKER-BC InterChange | |
| AA T051 Tank Oil Black | A-A | E | Blocking ... | EAGLE-ED | |
| AA T059 Tank Oil Black | A-D | L | Blocking ... | FOX-FA | |
| H-HAZARDOUS! | | | | | |
| Train departs ABLE traveling West with 5 cars (2 Loads, 3 Empties), 220 feet, 225 tons - Departure Time is 00:00 | | | | | |

Blocking is the Destination Location and Track information and is shown in the SETOUTS area beside each pickup. NOTE: Since Blocking uses the SETOUTS area, setouts will not be printed in those lines and by nature will increase the length of the manifest.

Now let's look at another Option in the right column:

Fixed Width Font YES

Fixed Width is the Preference, YES is the current setting. This indicates that the car information on the manifest will be printed using a fixed width font (Courier New). You may change this by changing YES to NO (or NO to YES). This will then change the font to the default font (Arial) to Courier New (or visa versa). A brief explanation of the fixed width font issue. Fixed Width Font creates all letters with the same width. This allows all characters to align vertically. If you use the Fixed Width Font, MC will pad your Road Name if less that four (4) characters and Car Number if less than six (6) numbers with spaces. These individual areas of the Car Information will then appear as if they are left justified columns making the Car Number a bit easier to locate when working with a large manifest in a large yard. See the manifest 'snippet' below.

| Scheduled work in ABLE - and departs at 00:00 | | | | | | |
|--|----------|------|--|---------|----------|------|
| "Location Comment for ABLE - This is where the new LC should show up." | | | | | | |
| PICKUPS | | | | SETOUTS | | |
| CAR | LOCATION | LOAD | | CAR | LOCATION | LOAD |
| AA R129 Reefer Black | A-D | E | | | | |
| [H] AA F019 Flatcar Blac | A-G | L | | | | |
| [H] AA F015 Flatcar Blac | A-G | E | | | | |
| AA T051 Tank Oil Bla | A-A | E | | | | |
| AA T059 Tank Oil Bla | A-D | L | | | | |
| H-HAZARDOUS! | | | | | | |
| Train departs ABLE traveling West with 5 cars (2 Loads, 3 Empties), 220 feet, 225 tons - Departure Time is 00:00 | | | | | | |

As you see in the 'snippet' above, the Road Name, Car Number, and Car Information line up in columns. NOTE: This is not a particular good example as all of the Road Names and Car Numbers are the same length.

We also need to touch on the Multi-Line Delim, (multiple line comment delimiter). This one is a bit tricky as it involves changes within JMRI for it to function. You will see that the current delimiter is /*/ (you may change this to any value you prefer). When MC sees this particular character sequence within a JMRI Comment, it will treat it as a New Line command. This gives you the ability to have multiple line comments in MC from a single comment in JMRI.

Within JMRI you would insert these three characters, /*/, where you would like one comment line to stop and another to start. NOTE: You do not use this code at the beginning or end of the JMRI comment.

If your JMRI comment was something like:

"WOW This is a nice feature Thank you MC" (no quotes)

and you inserted the delimiter as set in MC so that the comment in JMRI looks like:

"WOW/*/This is a nice feature/*/Thank you MC", the MC output would be:

| |
|------------------------|
| WOW |
| This is a nice feature |
| Thank you MC |

Below is a listing of all Output Preference Codes and what they do:

- Pickup Blocking - YES = Print, NO = Don't Print [This prints the Destination information beside the Pickup info so that cars may be blocked for Setout]
- Pickup Comments - YES = Print, NO = Don't Print
- Extended Car Descriptions - YES = Print, NO = Don't Print [This is the information

following the "-" that JMRI allows]

- **Extended Track Information - YES = Print, NO = Don't Print** [This is the information following the "-" that JMRI allows]
- **Page Headings - YES = Print, NO = Don't Print** [This controls if other than the first page prints the Manifest Header information]
- **Print Loads - YES = Print, NO = Don't Print** [YES will print load information, NO will print only E or L. This Preference also affects the Column Widths of the various information on the manifest.] Also, see Output Fixed Width Font below.
- **Multi-Line Delimiter =** You may set this value to anything you wish. If you then include this in your Comments within JMRI, MC will treat it as a New Line command. Use this delimited BETWEEN Comments, not at the beginning of your JMRI Comment nor at the end. If you do not include this in your JMRI Comment, it has no effect. REMEMBER, the MC delimiter value must be what is used within your JMRI Comment or it will not function.
- **Print Preview - YES = Display Preview, NO = Do not Display Preview** [This allows you to view the Manifest in Excel as it is built and provides the opportunity to print to any printer on your system]
- **Print Hard Copy - YES = Print, NO = Don't Print** [This will generate a printed copy of the manifest without any intervention on your part. The output goes to your default system printer. This is a good choice if using the JMRI Link to MC.]
- **Print Crew Line - YES = Print, NO = Don't Print** [This will generate a "fill-in-the-blank" line under the manifest header and before the first location. This will provide room for you to hand enter the names of the crew running this particular train/manifest.]
- **Page Breaks - YES = Do it, NO = Don't Do it** [Tracks the number of lines output per page and inserts a Page Break (based upon Lines Per Page) so that a Location is not split on two pages] NOTE: This is in very early testing stages. If it does not work for you, I would like to know what your Preference settings are and have you send me the offending CSV File so that I may use this to test.
- **Include Times - Yes = Print, No = Don't Print** [This controls whether Arrival and Departure Times are included on the manifest. For those not running by "the clock", these times are probably not necessary. The choice as always is yours.
- **Lines Per Page -** This goes hand in hand with the Output Page Breaks. It may be worthwhile to tweak this number (if necessary) as it may affect how page breaks appear for your particular manifest. Once I have this nailed down, the value should remain constant and may be removed as a Preference in future releases. The current value of 66 seems to be working just fine.
- **Print Car Color - YES = Print, NO = Don't Print** [Adds the Car Color on the end of the other CAR information]
- **Fixed Width Font - YES = Use, NO = Don't Use** [Fixed Width Font will trigger aligning the Road Name, Car Number, and Car Type in columns within the CAR information and uses COURIER NEW font, which is a fixed width font. Normal (NO) uses the standard ARIAL font which is the default for MC]. Also see Output Load Descriptions above.
- **Bold Car Information - YES = Bold, NO = normal**

- **8 Point Font - YES = 8 Point, NO = 10 Point (Standard)** [This is used to allow more data to show for each area of the manifest]. **NOTE:** The manifest is already squeezed to be one page wide, so changing the font may not have as much impact as one would think. Try it both ways and then decide which you prefer.
- **Print Lines - YES = Print, NO = Don't Print** [This allows one to not print the individual lines between the rows of Pickups and Setouts. It is used to reduce the amount of ink usage and to reduce print time. Again try each and then decide.]
- **Save Manifest File - YES = Save, NO = Don't Save** [If you only need the printed output, you could set this to NO. If you would like to save the generated output in case you might need it later, set to YES. The manifest will be saved in the same directory as the input file and will have the same name as the input file but will have an extension of .xls rather than .csv]

It is up to you how you set these Preferences. They do make a significant difference in the output generated by MC. Refer to Appendix C: Output Preferences Examples at the end of this document. MC comes with these Form Element Preferences pre-set. These 'default' values are show below.

| PREFERENCE | DEFAULT SETTINGS | PREFERENCE | DEFAULT SETTINGS |
|----------------------------|------------------|--------------------|------------------|
| Pickup Blocking | NO | Page Breaks | YES |
| Print Comments | YES | Include Times | YES |
| Extended Car Description | YES | Lines Per Page | 66 |
| Extended Track Description | YES | Print Car Color | YES |
| Page Headings | YES | Fixed Width Font | YES |
| Print Loads | YES | Bold Car Info | YES |
| Multi-Line Delimiter | /*/* | 8 Point Font | YES |
| Print Preview | YES | Print Lines | YES |
| Print Hard Copy | NO | Save Manifest File | NO |
| Print Crew Line | NO | | |



Your Preference Settings changes will not appear in the Sample area unless you click on the [Update Preferences] Button. They are automatically updated when you select the [Return To Welcome] Button at the upper right on the Preferences Screen.

PICKUPS/SETOUTS MANIFEST NAMES [\(Return\)](#)



This selection on the Welcome Screen allows you to change the Names of the Headings for the Pickup and Setout areas of the Location box. Some might prefer PULLS and CUTS. When

you click this button you will be asked for the text that you would like to appear in this area. First you will enter the PICKUP text and then the SETOUT text. You may enter any characters you wish for these values. After entering the SETOUT value, you are returned to the Welcome Screen. The default values are PICKUPS and SETOUTS. See manifest 'snippet' below. When you change these values, they will be displayed in the Preferences Screen as part of the change so that you can check them.

| PICKUPS | | | SETOUTS | | |
|---------|----------|------|---------|----------|------|
| CAR | LOCATION | LOAD | CAR | LOCATION | LOAD |

Default Value set to PICKUPS and SETOUTS

| PULLS | | | CUTS | | |
|-------|----------|------|------|----------|------|
| CAR | LOCATION | LOAD | CAR | LOCATION | LOAD |

Set to PULLS and CUTS

NOTE: You may also enter these values directly into the appropriate cells on the Preferences Screen.

MANIFEST LOGO [\(Return\)](#)



This selection allows you to choose any graphic file that you like to use as a logo for the manifest. When you click on this button you will be shown a normal Windows File Input Dialog Box asking for the name of the logo file you would like you use. Navigate until you find the logo of choice and Double Click (or select the file and Click Open). MC will do it's best to manipulate the graphic, whatever size, to make it fit in the header area of the manifest. Remember that if you have chosen a logo within JMRI, it will override this setting. NOTE: Wide and low height graphics will be manipulated but the result may run over in the manifest Railroad's name. The default value is 'blank' - or - use the default JMRI Logo.

Several sample Logos are show in Appendix D: Logo Selection Examples at the end of this document.

RESET MANIFEST FORM [\(Return\)](#)



There may be times when MC does not complete it's processing successfully. If this occurs it may leave the base manifest form in a mid-process status. If you see that subsequent manifests are not being generated properly, use [Reset Manifest Form] Button and the base form will be reset to it's default settings. This does not affect the Preferences settings but merely resets the form to it's original format. This could have been done automatically when MC begins but it takes some time to process and should only be required in very rare

circumstances.

EXIT PROGRAM [\(Return\)](#)



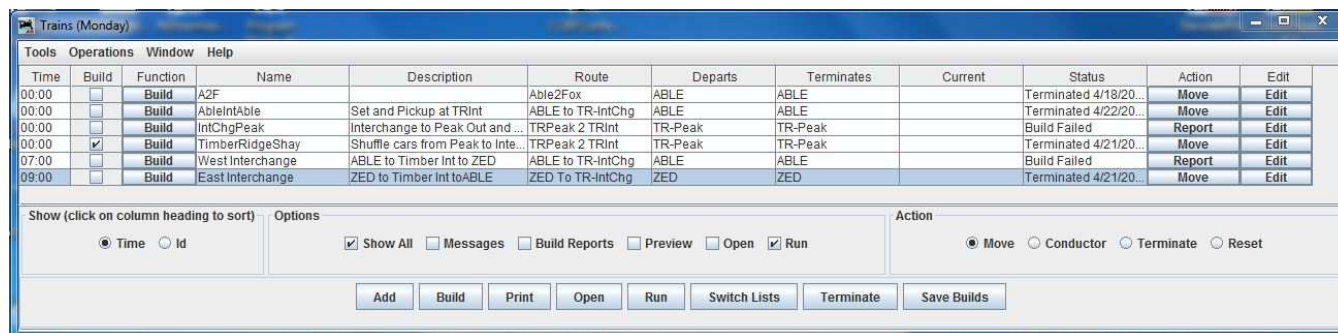
This button seems rather self explanatory. When you are finished with MC, Click on the [Exit Program] Button to close the program.

FILES LOCATION AND PRINTERS SCREEN [\(Return\)](#)

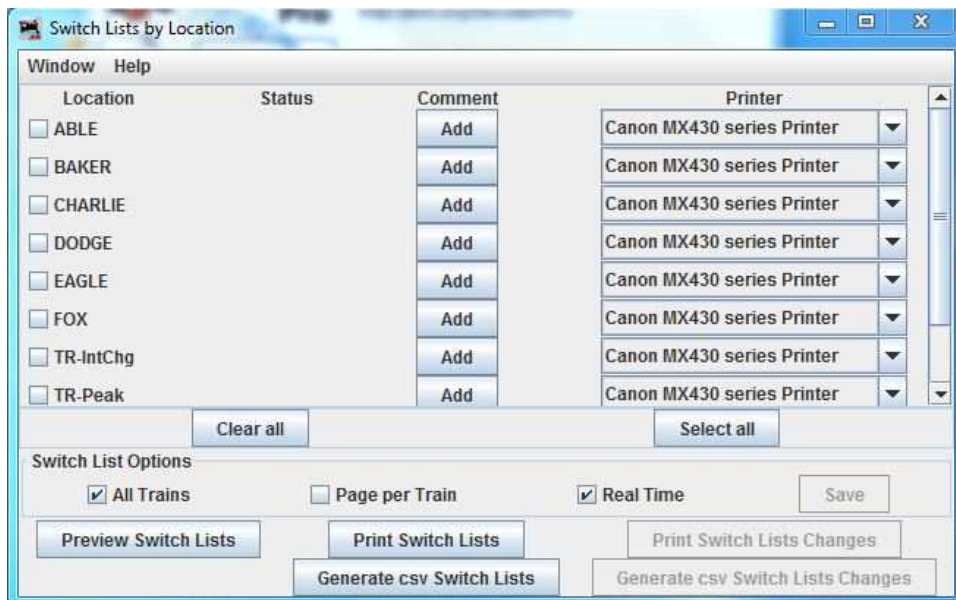
The Files Tab is used to store information to various directories that may be used with MC. There are two sections to this page. The first stores the location of the input CSV Manifest files for your particular computer setup. These are unique to each user. When you first download and install MC4JMRI, you will need to run one test manifest, manually (not from JMRI link), to set these file directory locations. You should be warned if you do not have these files directories set when you first run MC4JMRI.

The second area is used to store any printers that might be specific to your system. This **ONLY** needs to be used if you have more that one print and wish to have your manifests print on different printers. Inspector Dave again asked for this enhancement. It has been added to JMRI and it is now passed to MC. However, due to the quirky way the Windows is set up, MC can not obtain the proper address that Windows needs in order to redirect to a different printer. This needs to be done manually and is a rather convoluted process on the MC side of things.

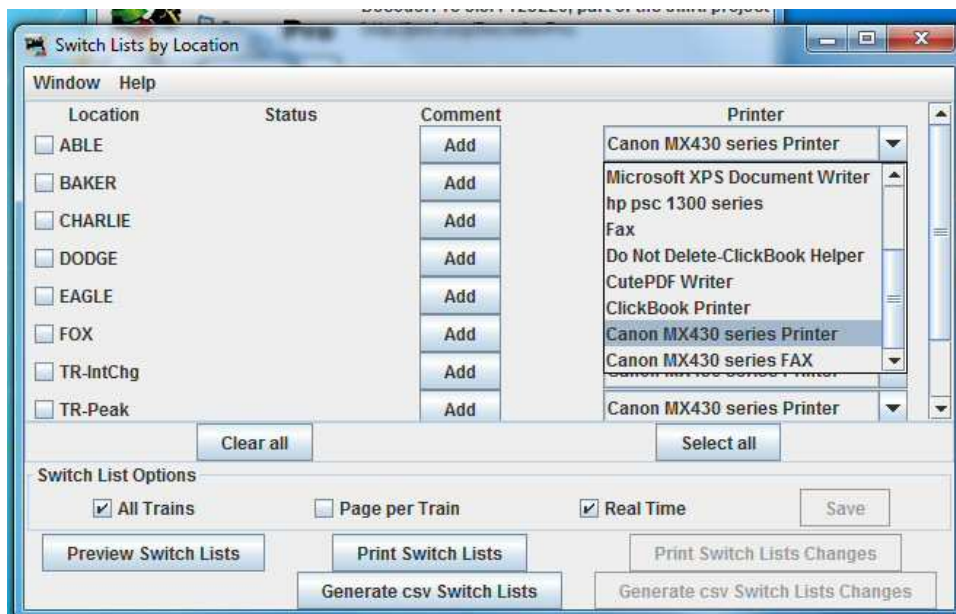
The first step is to open JMRI and select the Trains option from the Operations Menu.



Next select the Switch Lists button in the list of buttons at the bottom of the window. You will then be presented with the Switch Lists by Location window.



The printer currently assigned is listed to the right of each Location. Select the Down Arrow beside the Printer box and select the printer of choice.




Once selected you will need to make a note of each of the printers you will be using. Or you may enter the Printer Name selected, as noted from the JMRI list in the Common Name field in the Printers section of MC4JMRI. Once you have done this, you may close JMRI and proceed below.

I have introduced an ancillary program that is used to determine the names of the printers that are known to your Windows system. Again, this is unique to each user. The name of this program is MC4PRNT.xls. This program was copied from the Internet and has a strange way of getting printers but once you do it, you won't need to do it again until you get a new printer or change where you want your manifest to print.


MANIFEST CREATOR

RETURN TO
WELCOME



FILE LOCATIONS

VERSION 3.16 AS OF 04/15/2013



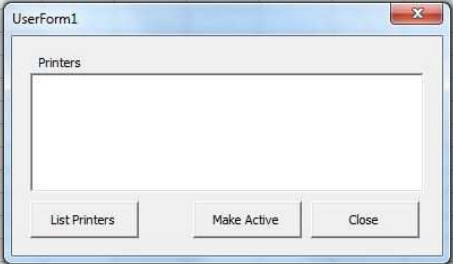
| FILE TYPE | FILE LOCATION/NAME | |
|---|--|-----------|
| CSV MANIFEST INPUT FILE: | C:\Users\Dan\JMRI\OPERATIONS\csvMANIFESTS\ | |
| MANIFEST OUTPUT FILE: | | |
| MANIFEST LOGO FILE: | | |
| MANIFEST LOG FILE: | | |
| CSV FILE OF FILES FILE: | C:\Users\Dan\JMRI\OPERATIONS\csvMANIFESTS\ | |
| PINTERS | COMMON NAME | EXTENSION |
| PRINTER 01: | HP DESKJET D1300 SERIES | ON NEO0: |
| PRINTER 02: | HP DESKJET 940c | ON NEO1: |
| PRINTER 03: | HP DESKJET 3900 SERIES | ON NEO2: |
| PRINTER 04: | \\SUE-PC\HP Psc 1300 SERIES | ON NE14: |
| PRINTER 05: | CANON MX430 SERIES PRINTER (COPY 2) | ON NEO8: |
| <p>DAVE: 01, 02, & 03 ARE ARE YOUR PRINTERS I BELIEVE. THE NAME IS CASE SENSITIVE DAN</p> | | |
| <p>C:\Users\Dan\JMRI\OPERATIONS\csvMANIFESTS\ C:\Users\Dan\JMRI\OPERATIONS\csvMANIFESTS\MANIFESTS\ C:\Users\Dan\JMRI\OPERATIONS\csvMANIFESTS\LOGOS\OR&WV-LOGO.PNG</p> | | |
| <p>C:\Users\Dan\JMRI\OPERATIONS\csvMANIFESTS\csvFILESFILE.TXT</p> | | |

Let's look at MC4PRNT. Find this program downloaded from the MC4JMRI directory in the Files section of the JMRI Users Group. (Saving it to your csvManifest directory is a logical location but that is not necessary) and run it. The figure below shows the screen when you first start MC4PRNT. You will need to answer the normal Enable Macros with a YES before you see this screen.

| C | D | E |
|-----------------|--|---|
| List Printers | | |
| by Chip Pearson | chip@cpearson.com | |
| 22-Sep-2012 | www.cpearson.com/Excel/GetPrinters.aspx | |
| List Printers | | |
| Active Printer: | CutePDF Writer on CPW2: | |
| | | |
| | | |

Once at this point you want to Left click on the List Printers button. You will see the following screen.

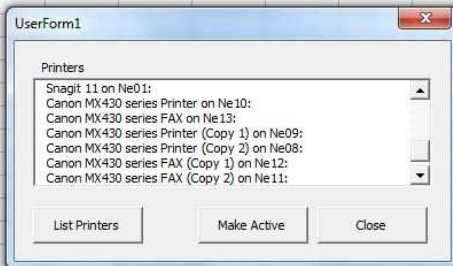
| C | D | E | F | G | H | I | J | K | L |
|-----------------|--|---|---|---|---|---|---|---|---|
| List Printers | | | | | | | | | |
| by Chip Pearson | chip@cpearson.com | | | | | | | | |
| 22-Sep-2012 | www.cpearson.com/Excel/GetPrinters.aspx | | | | | | | | |
| List Printers | | | | | | | | | |
| Active Printer: | CutePDF Writer on CPW2: | | | | | | | | |



The dialog box 'UserForm1' has a title bar with a close button. It contains a label 'Printers' above a large empty rectangular area. At the bottom, there are three buttons: 'List Printers', 'Make Active', and 'Close'.

You need to Left click on the newly displayed List Printers button to arrive at your final destination. Please see figure below.

| C | D | E | F | G | H | I | J | K | L |
|-----------------|--|---|---|---|---|---|---|---|---|
| List Printers | | | | | | | | | |
| by Chip Pearson | chip@cpearson.com | | | | | | | | |
| 22-Sep-2012 | www.cpearson.com/Excel/GetPrinters.aspx | | | | | | | | |
| List Printers | | | | | | | | | |
| Active Printer: | CutePDF Writer on CPW2: | | | | | | | | |



The dialog box 'UserForm1' now has a populated list of printers in the list box. The list includes: Snagit 11 on Ne01; Canon MX430 series Printer on Ne10; Canon MX430 series FAX on Ne13; Canon MX430 series Printer (Copy 1) on Ne09; Canon MX430 series Printer (Copy 2) on Ne08; Canon MX430 series FAX (Copy 1) on Ne12; and Canon MX430 series FAX (Copy 2) on Ne11. The buttons 'List Printers', 'Make Active', and 'Close' are still present at the bottom.

You may not be able to see the detail in the above figure but each on the printers ends with 'on Nenn' were nn is a two digit number. You need to copy or type this information into the right hand portion of the Files and Printers screen (above). It must be enter just as it is displayed in the MC4PRNT dialog box. These need to be entered to the right of the corresponding printer that you listed from JMRI. These must match - printer and "on" address if you would.

You may then Left click on Close in the MC4PRNT Dialog Box. Then close the MC4PRNT screen. It will ask if you want to save your changes. It does not matter how you answer this question. Once all that is accomplished, Left click on the Return To Welcome button on the Files and Printers screen and you should be ready to go.

CREATE MANIFEST - JMRI AUTO LINK [\(Return\)](#)

When using the JMRI Auto Link with MC, you will not be using any part of MC on your own. The program will be started from JMRI and will terminate upon completion. You may interact with MC if you have the Print Preview Preferences set to YES. This may be useful if you would like to print manifests to a specific printer other than your system's default printer. You will see the MC Welcome Screen flash on your computer screen and other unusual looking activities will take place. At this point in development, you should expect this as normal operating procedure. It is hoped that future releases of MC will eliminate much of this extra activity.

NOTE: YOU are NOT able to change Preferences when using the JMRI to MC Link. You must use Manual Mode. You must also run MC4JMRI.xls in Manual Mode the very first time it is used to set up the required directories.

You must adjust some settings in JMRI before the JMRI Auto Link will work properly. In the Trains window, select Tools > Options and then set the Check Box by Generate CSV Manifest in the Options section at the bottom of the Options screen and then click Save. Next select Tools > Setup Excel Program (Manifest Creator) and enter the name of the Excel file that JMRI should execute. This would be MC4JMRI.xls.

Two extra Check Boxes (Open and Run) appear in the Trains window when you select "Generate CSV Manifest" in the Options window. These two Check Boxes are mutually exclusive meaning you may select one or the other but not both. To trigger MC from JMRI, you must select the "RUN" Check Box. You then Build you train and once it completes successfully you will see RUN in the Function column by the train you just built. When you click on Run, JMRI will trigger MC and pass it the name of the CSV file to process. You may also select several trains to build and then use the Build button on the bottom of the window. All of the Trains successfully Built will now show Run in the Function column. Now you may click on the Run button on the bottom of the window and JMRI will trigger MC and pass it all of the CSV files that it should process.

The Link between JMRI and MC is a text file named MCFilesFile.txt. This name is to indicate that this is a "file of files", which is exactly what it is and is found in the csvManifests Sub-directory in operations directory within JMRI. JMRI creates (or updates) this "file of files" and adds the name(s) of the CSV manifest file(s) for MC to process before linking to MC. MC then looks for this "file of files", opens it if found, and processes all of the CSV manifest files that are currently in this "file of files". When MC has processed all the CSV manifest files in this "file of files", it will delete MCFilesFile.txt. The next time a Train Build is Run, JMRI will create MCFilesFile.txt again and add the CSV manifest file(s) that MC should process. If everything goes as planned, JMRI creates MCFilesFile.txt and MC deletes MCFilesFile.txt. If for some reason MC does not complete MCFilesFile.txt will not be deleted. The next time that Train Build is run, JMRI will add more CSV manifest files to the existing MCFilesFile.txt. This could easily be the same manifest as was already in

MCFilesFile.txt. This might make it appear that MC is in a loop as it will process the same file more than once. If MC does not end properly, by disappearing, then something is wrong and needs to be investigated. (That is probably when you send me a note!)

The OPEN button works in a similar fashion but will display the contents of the CSV file that was/will be sent to MC for processing. You could investigate records that appear to be causing MC issues or that do not appear as you would think.

NOTE: If you have not yet built a train with the Generate CSV Manifest option selected, you should build one train just so JMRI will create the csvManifests sub-directory in the Operations directory within JMRI on your system. You will also need this directory so that you can place the application, MC4JMRI.xls, in it's proper location.

The following paragraph is identical to that for generating a manifest manually. It refers to how you have set up your Preferences and they have the same impact on what MC generates whether it be generated manually or via the JMRI link.

If you do receive a preview look at the manifest, you can print the manifest using the Print (icon) option within this window (here you could print to any printer on your system). You may also select the Close (icon) if you do not wish to print a hardcopy from here. Remember that you still might receive a hardcopy again based upon your Preference settings. If you have set your Preferences so that you ask for a file to be created, MC will create the manifest file and save to the same directory as your input file directory. Unlike MC in manual mode, when MC has finished performing the necessary actions, based upon your Preferences, it terminates. If you asked for MC to create a manifest file and wish to locate the manifest later, it has the same name as the CSV Input file but has an extension of .xls (Excel). This file will remain here (same directory as your input CSV file) until your next build for this particular train. This is the very basic operation of MC. It is quick and easy to do and generates formatted manifest as shown in Appendix A, B, C, or D at the end of this document. To make things really interesting change some of the Preferences described above.

IN CLOSING [\(Return\)](#)

I suggest that you play with something like the Car-P1 under PICKUPS and Car-S1 under SETOUTs to see what the affect is. Just a warning: You can set the Text and Fill to the same color. However, I doubt if that would be a good choice as you will not be able to read the text. One other note: The COLOR CHART shows just the Color and the Color's numeric (internal to the program) value. The color in the case of the CODE CHART is ALWAYS displayed as the background color behind the number so that you may see more clearly what that Color numeric value will produce whether it be used for Text or Fill.

I also suggest that you change one Preference at a time in the OUTPUT OPTIONS Section, first generate a manifest with the current settings, look at the result using Print Preview, change one Preference, generate the same manifest, look at the result. Now pick the Preference setting that you like best for this particular OUTPUT OPTION. Print and keep your first manifest and go through the various OUTPUT OPTIONS comparing the result to your very first manifest.

ENJOY!

Questions, comments, or suggestions are welcomed and may be sent to:

Dan Foltz

DannyDont@GMail.Com

APPENDIX A: DEFAULT PREFERENCES EXAMPLE [\(Return\)](#)

"BNSF Kootenai River sub"

Manifest for 1000
 L-P-DK-HS-PO (UP)
 Validated on 10/7/2010 22:00

"Kootenai River and KRCDUP Run"

Scheduled work in Spokane - and departs at 08:16

| PICKUP'S | | | | SETOUTS | | |
|-----------------------|---------------------|---------|--------|------------------|------|--|
| CAR | LOCATION | LOAD | CAR | LOCATION | LOAD | |
| 11) SP 4078 | GRD 2000 | Track 1 | Duesel | Customer Address | 4798 | |
| SP28 6009 | Coal and Gravel | Track 1 | | | | |
| MDLX 31283 | Condb-p-grain Brown | Track 1 | | | | |
| MDLX 310189 | Gen 3-Track | Track 1 | | | | |
| SP 24805 | Calrose Yellow | Track 1 | | | | |
| 11:00:00 2-Caboose | | | | | | |

Train departs Spokane tracking East with 5 cars (2 Loads, 1 Empty), 287 NW, 273 tons - Departure Time is 08:16

The following train(s) have No Work

| |
|-------------------|
| Yardley Jct 03:30 |
| Irish 03:46 |
| Houser 04:00 |
| Rimsley 04:16 |
| FD 608 Jct 04:30 |

Scheduled work in RR Bldg. Train arrives at 08:46 and departs at 08:57



"MILLER, HICK & THE RR BLDG AND 30th St of the RR"
 We'll be plant first so you can build your outbound trains there.
 The arrival track need to be open for other trains that work in interchange."

| PICKUP'S | | | | SETOUTS | | |
|-------------|----------------------|-----------|-----------|----------|------|--|
| CAR | LOCATION | LOAD | CAR | LOCATION | LOAD | |
| BNSF 724924 | Box Brown | Track 1 | Piling | | | |
| BNSF 180320 | Box Tie Yellow | Track 1 | empty | | | |
| BNSF 310294 | Gen+crap Black | Track 1 | empty | | | |
| BNSF 413841 | Condb-p-grain Brown | Track 4 | grain | | | |
| BNSF 418300 | Condb-p-grain Brown | Track 4 | grain | | | |
| BNSF 473216 | Condb-p-grain Brown | Track 4 | grain | | | |
| CRP 240120 | Coal and Gravel | Track 1 | c. gravel | | | |
| UPX 1305 | Gen+crap Black | Track 1 | empty | | | |
| BNSF 311476 | Gen+crap Red | Track 1 | empty | | | |
| BNSF 310320 | Gen+crap Black | Track 1 | empty | | | |
| TRX 6832 | Condb-p-grain Yellow | Track 4 | grain | | | |
| ACFX 12001 | Tank-Hauler White | Track 1-2 | empty | | | |

Train departs RR Bldg tracking East with 16 cars (2 Loads, 7 Empty), 864 Red, 1113 tons - Departure Time is 08:57

The following train(s) have No Work

| |
|---------------|
| KR East 06:12 |
|---------------|

| "BNSF Kootenai River sub" | | | | | | |
|---|--------------------|--|--------------|--------------------|---|-------|
|  | | Manifest for 803 "Potlatch Mill job" Validated on 2/4/2000 21:14 | | |  | |
| "Potlatch Mill work" | | | | | | |
| Scheduled work in Potlatch - and departs at 08:00 | | | | | | |
| PICKUPS | | | SETUPS | | | |
| CAR | LOCATION | LOAD | CAR | LOCATION | LOAD | |
| 11) PFK 15 | SI | Engine service | Decolter #10 | | | |
| 12) PFK 2026 | SI | Engine service | Decolter #10 | | | |
| MC 21849 | Box AC Maroon | Stacks Paper | MC 21849 | Box AC Maroon | Flank 2 | empty |
| MS 45033 | Box AC Brown | OFF spot | MS 45033 | Box AC Brown | Flank 2 | empty |
| GR 174221 | Woodchip Blue | empty | | | | |
| GR 174224 | Woodchip Blue | empty | | | | |
| MSW 216141 | Woodchip Brown | empty | | | | |
| MSW 712097 | Box Brown | paper | | | | |
| MSW 721214 | Box AC Brown | paper | | | | |
| [H] UTA 852288 | Stack-pulp Black | empty | | | | |
| GACX 3243 | Consp-pink Gray | empty | | | | |
| GACX 3281 | Consp-pink Gray | empty | | | | |
| OME 22045 | Consp-pink Gray | empty | | | | |
| BR 443716 | Consp-pink Gray | empty | | | | |
| MSW 712097 | Box Brown | paper | | | | |
| MS 450448 | Box AC Brown | paper | | | | |
| SSM 25123 | Box Maroon | empty | | | | |
| PAR 504334 | Box AC Black | empty | | | | |
| MSW 712099 | Box Brown | empty | | | | |
| ACFX 78074 | Tank-lacolin White | empty | | | | |
| L.Loomotive | | | | | | |
| L.Loomotive | | | | | | |
| Train departs Potlatch traveling East with 19 cars (4 Loads, 12 Empty, 8712 lbs, 728 tons - Departure Time is 08:00 | | | | | | |
| Scheduled work in Troy - Train arrives at 08:16 and departs at 08:46 | | | | | | |
| "Potlatch finish overflow cars can be spotted on either track 1 or 2" | | | | | | |
| PICKUPS | | | SETUPS | | | |
| CAR | LOCATION | LOAD | CAR | LOCATION | LOAD | |
| ACFX 81224 | Consp-pink White | Ironore-p | ACFX 81224 | Consp-pink White | Flower glass Flyash | empty |
| BR 318000 | Woodchip Green | v. chips | GR 174221 | Woodchip Blue | empty | |
| BR 318008 | Woodchip Green | v. chips | GR 174224 | Woodchip Blue | empty | |
| MSW 241424 | Woodchip Brown | v. chips | MSW 216141 | Woodchip Brown | empty | |
| BR 357602 | Woodchip Green | v. chips | MSW 712097 | Box Brown | paper | |
| BR 357643 | Woodchip Green | v. chips | MSW 721214 | Box AC Brown | paper | |
| BR 35751 | Consp-pink Green | wash | UTA 852288 | Stack-pulp Black | empty | [H] |
| MS 450724 | Box AC Blue | ref. paper | GACX 3243 | Consp-pink Gray | empty | |
| MS 450732 | Box AC Brown | ref. paper | GACX 3281 | Consp-pink Gray | empty | |
| MSW 504334 | Box AC Brown | ref. paper | OME 22045 | Consp-pink Gray | empty | |
| ACFX 78080 | Tank-lacolin White | lacolin | BR 443716 | Consp-pink Gray | empty | |
| MS 36020 | Pulp Black | pulp | MSW 712097 | Box Brown | paper | |
| PTM 80240 | Pulp Yellow | pulp | MS 450448 | Box AC Brown | paper | |
| TCC 13 | Exp-trash Yellow | exp. | SSM 25123 | Box Maroon | empty | |
| BR 501870 | Gen Black | empty | PAR 504334 | Box AC Black | empty | |
| | | | MSW 712099 | Box Brown | empty | |
| | | | ACFX 78074 | Tank-lacolin White | empty | |
| Train departs Troy - traveling West with 14 cars (4 Loads, 1 Empty, 8827 lbs, 1342 tons - Departure Time is 08:46 | | | | | | |

The Manifest Header provides several pieces of information. 1: The Railroad Name (*BNSF Kootenai River sub*). 2. The Train Name (Manifest for 1000). 3. The Train Manifest Name (*L-SPOKRSPO (UP)*). 4. The Date and Time the Manifest was generated by JMRI (Validated on 10/7/2000 22:00). 5. The Default Manifest Logo on the Left and Right of the Manifest Header. There are a couple of additional items of interest on this Manifest. First, this is just the first page of a multi page manifest. Second, notice that MC automatically generated a comment for the Loco and Caboose. Also notice the Route Comment just under the Manifest Header (*Kootenai River and KRID UP turn*). There is also a Route Location Comment

The Manifest Header provides several pieces of information. 1: The Railroad Name (*BNSF Kootenai River sub*). 2. The Train Name (Manifest for 803). 3. The Train Manifest Name (*Potlatch Mill job*). 4. The Date and Time the Manifest was generated by JMRI (Validated on 2/4/2000 21:14). 5. The Default Manifest Logo on the Left and Right of the Manifest Header. There are several Additional items of interest on this Manifest. First, this is just the first page of a multi-page manifest. Second, notice that MC automatically generated a comment for the Loco and Caboose. Third, there is one Hazardous Car, this is denoted by the text in red, the [H] beside the car, and the [H] Hazardous message in the comments area. Fourth, there are

at KR intg. This happens to utilize the multi-line comment feature of MC. Line 1: *HELPFUL HINTS! The KFID area is on both sides of the asile.* Line 2: *Work the tie plant first so you can build your outbound trains there.* Line 3: *The arrival track needs to be open for other trains that work the interchange.* This comment would be entered in JMRI as follows: *HELPFUL HINTS! The KFID area is on both sides of the asile.*/Work the tie plant first so you can build your outbound trains there.*/The arrival track needs to be open for other trains that work the interchange.* Notice the use of the **/*, MC's multi-line delimiter. Using this method, each comment in JMRI can be one to many lines in MC. Lastly, notice the section listing the Locations that are passed along the route with no work.

some cars that are to MOVE from one spot in a location to another spot in the same location. These are denoted by the M between the Pickups (PULLS) and Setouts (CUTS). Also notice the Route Comment just under the Manifest Header (*Potlatch Mill work*). There is also a Route Location Comment at Troy jct (*Potlatch finish overflow cars can be spotted on either track 1 or 2*).

APPENDIX B: COLOR PREFERENCES EXAMPLES [\(Return\)](#)

Using the same two CSV File as in Appendix A, lets change two of the Color Preferences, namely Pickup Car Color and Setout Car Color. The results appear below. First a look at the Preference Settings.

| PICKUPS | TEXT | FILL | SAMPLE |
|-------------------|------|------|--------|
| CAR-P1 | 1 | 6 | P1 |
| COMMENT (CAR)-P2 | 1 | 2 | P2 |
| HAZARDOUS-P3 | 3 | 2 | P3 |
| CABOOSE/FRED-P4 | 1 | 2 | P4 |
| Loco-P5 | 1 | 2 | P5 |
| COMMENT (Loco)-P6 | 1 | 2 | P6 |
| ADD HELPER-P7 | 1 | 2 | P7 |
| HEADINGS-P8 | 1 | 2 | P8 |
| COMM(CAR/FRED)-P9 | 1 | 2 | P9 |

| SAMPLE | FILL | TEXT | SETOUTS |
|--------|------|------|-------------------|
| S1 | 34 | 1 | S1-CAR |
| S2 | 2 | 1 | S2-COMMENY (CAR) |
| S3 | 2 | 3 | S3-HAZARDOUS |
| S4 | 2 | 1 | S4-CABOOSE/FRED |
| S5 | 2 | 1 | S5-Loco |
| S6 | 2 | 1 | S6-COMMENT (Loco) |
| S7 | 2 | 1 | S7-REMOVE HELPER |
| S8 | 2 | 1 | S8-HEADINGS |
| S9 | 2 | 1 | S9-COMM(CAR/FRED) |

Change to Car Color Preferences PICKUP - Text=1=Black Fill=6=Yellow

| "BNSF Kootenai River sub" | | | | | | | | | |
|--|----------------------|-----------|-----------|----------|------|--|--|--|--|
| Manifest for 1000 "Kootenai River sub" Validated on 10/7/2015 02:00 | | | | | | | | | |
| "Kootenai River and KRIDUP turn" | | | | | | | | | |
| Scheduled work in Spokane - and departs at 06:16 | | | | | | | | | |
| PICKUPS | | | SETOUTS | | | | | | |
| CAR | LOCATION | LOAD | CAR | LOCATION | LOAD | | | | |
| SP 4055 | GR22 2000 | Track 1 | Classed | | | | | | |
| SP 4059 | Coal Mill Orange | Track 1 | Classed | | | | | | |
| MCLE 87253 | Condisp-PS Brown | Track 1 | p pellets | | | | | | |
| SP 210159 | Gen Black | Track 1 | empty | | | | | | |
| SP 124501 | Condisp Yellow | Track 1 | crw | | | | | | |
| 1 Locomotive 2 Coaches | | | | | | | | | |
| Train departs Spokane traveling East with 3 cars (2 Loads, 1 Empty), 275 feet, 878 tons - Departure Time is 06:16 | | | | | | | | | |
| The following (locom) have No Work | | | | | | | | | |
| Yardley 03 03:30 | | | | | | | | | |
| Train 03:46 | | | | | | | | | |
| Houser 04:00 | | | | | | | | | |
| Remsey 04:16 | | | | | | | | | |
| Folsom 04:30 | | | | | | | | | |
| Scheduled work in RR Bldg - Train arrives at 04:48 and departs at 04:57 | | | | | | | | | |
| "RR BLDG HOIST" The HOIST Lane is on both sides of the Bldg | | | | | | | | | |
| We'll be the plant first so you can build your outbound train there. | | | | | | | | | |
| The arrival track needs to be open for other trains that work the interchange. | | | | | | | | | |
| PICKUPS | | | SETOUTS | | | | | | |
| CAR | LOCATION | LOAD | CAR | LOCATION | LOAD | | | | |
| SPSF 724254 | Box Brown | Track 1 | shipping | | | | | | |
| SPSF 131732 | Box Lys Yellow | Track 1 | empty | | | | | | |
| SPSF 820249 | Gen-Comp Black | Track 1 | empty | | | | | | |
| SPSF 423347 | Condisp-grain Brown | Track 4 | grain | | | | | | |
| SPSF 423356 | Condisp-grain Green | Track 4 | grain | | | | | | |
| SPSF 473263 | Condisp-grain Brown | Track 4 | grain | | | | | | |
| SPSF 441450 | Coal Mill Gray | Track 1 | at least | | | | | | |
| DEFX 1395 | Gen-Comp Black | Track 1 | empty | | | | | | |
| SPSF 513476 | Gen-Comp Red | Track 1 | empty | | | | | | |
| SPSF 513230 | Gen-Comp Black | Track 1 | empty | | | | | | |
| FLDC 6822 | Condisp-grain Yellow | Track 4 | grain | | | | | | |
| ACFX 7307 | Track-Maolin White | Track 1-1 | empty | | | | | | |
| Train departs RR Bldg traveling East with 16 cars (14 Loads, 2 Empty), 664 feet, 1112 tons - Departure Time is 04:57 | | | | | | | | | |
| The following (locom) have No Work | | | | | | | | | |
| RR East 06:12 | | | | | | | | | |

| "BNSF Kootenai River sub" | | | | | | | | | |
|---|--------------------|----------------|------------|-------------|--------------------|--------------------|-------|--|--|
| Manifest for 803 "Potlatch Mill job" Validated on 2/4/2010 11:14 | | | | | | | | | |
| "Potlatch Mill work" | | | | | | | | | |
| Scheduled work in Potlatch - and departs at 06:00 | | | | | | | | | |
| PICKUPS | | | SETOUTS | | | | | | |
| CAR | LOCATION | LOAD | CAR | LOCATION | LOAD | | | | |
| FPS 10 | SI | Engine service | Classed | Decoder #10 | | | | | |
| FPS 2008 | SI | Engine service | Classed | Decoder #10 | | | | | |
| MC 21549 | Box AC Maroon | South Depot | empty | MC 21549 | Box AC Maroon | Flotank 2 | empty | | |
| MS 655119 | Box AC Brown | Off spot | empty | MS 655119 | Box AC Brown | Flotank 2 | empty | | |
| GR 174221 | Woodchip Blue | | empty | | | | | | |
| GR 174224 | Woodchip Blue | | empty | | | | | | |
| MSW 276141 | Woodchip Brown | | empty | | | | | | |
| SPSF 713287 | Box Brown | | paper | | | | | | |
| SPSF 721214 | Box AC Brown | | paper | | | | | | |
| SPSF 820268 | Gen-Comp Black | | empty | | | | | | |
| GACX 3243 | Condisp-ram Gray | | empty | | | | | | |
| GACX 3242 | Condisp-ram Gray | | empty | | | | | | |
| DMR 22006 | Condisp-ram Gray | | empty | | | | | | |
| GR 441718 | Condisp-ram Gray | | empty | | | | | | |
| SPSF 713237 | Box Brown | | paper | | | | | | |
| MS 454448 | Box AC Brown | | paper | | | | | | |
| SCAM 25123 | Box Maroon | | empty | | | | | | |
| MSW 654534 | Box AC Black | | empty | | | | | | |
| SPSF 713239 | Box Brown | | empty | | | | | | |
| ACFX 78074 | Track-Maolin White | | empty | | | | | | |
| 1 Locomotive 2 Coaches HAZARDOUS | | | | | | | | | |
| Train departs Potlatch traveling East with 18 cars (14 Loads, 2 Empty), 872 feet, 729 tons - Departure Time is 06:00 | | | | | | | | | |
| Scheduled work in Troy job - Train arrives at 06:16 and departs at 06:46 | | | | | | | | | |
| "Potlatch Mill overflow cars can be loaded on either track 1 or 2" | | | | | | | | | |
| PICKUPS | | | SETOUTS | | | | | | |
| CAR | LOCATION | LOAD | CAR | LOCATION | LOAD | | | | |
| ACFX 81224 | Condisp-ram White | Inbound-1 | empty | ACFX 81224 | Condisp-ram White | Power plant stream | empty | | |
| GR 174200 | Woodchip Green | | w. chips | GR 174211 | Woodchip Blue | | empty | | |
| GR 174224 | Woodchip Blue | | w. chips | GR 174224 | Woodchip Blue | | empty | | |
| SPSF 841434 | Woodchip Brown | | w. chips | MSW 276141 | Woodchip Brown | | empty | | |
| SPSF 827622 | Woodchip Green | | w. chips | SPSF 713287 | Box AC Brown | | paper | | |
| GR 187142 | Woodchip Green | | w. chips | SPSF 721214 | Box AC Brown | | paper | | |
| GR 8201 | Condisp-ram Green | | empty | DEFX 820268 | Gen-Comp Black | | empty | | |
| VCI 132747 | Box AC Blue | | left paper | GACX 3243 | Condisp-ram Gray | | empty | | |
| MS 454424 | Box AC Blue | | left paper | GACX 3242 | Condisp-ram Gray | | empty | | |
| MS 454432 | Box AC Brown | | left paper | DMR 22006 | Condisp-ram Gray | | empty | | |
| MSW 654534 | Box AC Brown | | left paper | GR 441718 | Condisp-ram Gray | | empty | | |
| ACFX 79280 | Track-Maolin White | | paper | SPSF 713237 | Box Brown | | paper | | |
| MC 3810 | Pulp Black | | pulp | MS 452448 | Box AC Brown | | paper | | |
| YFPA 82040 | Pulp Yellow | | pulp | SCAM 25123 | Box Maroon | | empty | | |
| FLDC 13 | Imp-wood Yellow | | wood | MSW 654534 | Box AC Black | | empty | | |
| MS 201870 | Gen Black | | empty | SPSF 713239 | Box AC Brown | | empty | | |
| ACFX 78074 | Track-Maolin White | | empty | ACFX 78074 | Track-Maolin White | | empty | | |
| HAZARDOUS | | | | | | | | | |
| Train departs Troy job traveling West with 16 cars (14 Loads, 2 Empty), 963 feet, 1242 tons - Departure Time is 06:46 | | | | | | | | | |

This is the same Manifest as the Manifest with Default Settings above for Train 1000. The only

This is the same Manifest as the Manifest with Default Settings above for

difference here is that the Color Preferences for PICKUPS and SETOUTS have been changed. The difference is obvious. Remember this is just the first page of a Multi-Page manifest so you do not see any SETOUTS.

Train 803. The only difference here is that the Color Preferences for PICKUPS and SETOUTS have been changed. The difference is obvious. Here there are some SETOUTS with their appropriate color as set in the Color Preferences. Notice that the Loco, Move, and Hazardous entries are correct per their Color Preferences.

Using the same two CSV File as in Appendix A, lets change one of the Form Color Preferences, namely Border Area. The results appear below. First a look at the Preference Settings.

| FORM ELEMENTS | TEXT | FILL | SAMPLE |
|------------------|------|------|--------|
| MANIFEST HEAD-F1 | 1 | 2 | F1 |
| BORDER AREA-F2 | 3 | 40 | F2 |

| ELEMENTS INCLUDED |
|--------------------------------------|
| RN, RC, TN, TC, VD, STATUS LINE |
| AT, DT, DTR, EDT, LN, TL, TW, NW, TT |

Change to Border Area Preferences - Text=3=RED Fill=40=Tan

"BNSF Kootenai River sub"

Manifest for 1000
 "LS PICKUP PO (UP)"
 Validated on 10/17/2015 22:00

"Kootenai River and KRIGUP turn"

Scheduled work in Spokane - and departs at 02:16

| PICKUPS | | | SETOUTS | | |
|-----------------------------|----------|-----------|----------------------|----------|------|
| CAR | LOCATION | LOAD | CAR | LOCATION | LOAD |
| SP 4038 GP20 2500 | Track 1 | Steel | Decoder Address 4038 | | |
| BAIR 6009 Coll. etc. Orange | Track 1 | steel | | | |
| WJLN 07283 Condup-PS Brown | Track 1 | g.pellets | | | |
| GMK 30159 Gon Black | Track 1 | empty | | | |
| UP 24501 Caboose Yellow | Track 1 | crew | | | |
| 110000000 | | | | | |
| 2Caboose | | | | | |

Train departs Spokane Valley East with 2 Cars (2 Loads, 1 Empty), 07 Red, 073 tons - Departure time is 02:16

The following (Locals) have no Work

| Locals | Time |
|------------------|------|
| Vadley Jct 03:30 | |
| Tran 02:46 | |
| Header 04:00 | |
| Rimney 04:16 | |
| Portan Jct 04:30 | |

Scheduled work in PR (e.g. Train arrives at 04:46 and departs at 04:57)

"HELFUL HINT # The PR E. side is on 30th 1/4 mi of the side."
 We're on the point first so you can build your round-trip time.

The arrival track needs to be open for other trains that work the interchange."

| PICKUPS | | | SETOUTS | | |
|--------------------------------|-----------|-------|---------|----------|------|
| CAR | LOCATION | LOAD | CAR | LOCATION | LOAD |
| BNSF 72484 Box Brown | Track 1 | empty | | | |
| FORD 151720 Box 2nd Yellow | Track 1 | empty | | | |
| BNSF 350216 Gon-a-crap Black | Track 1 | empty | | | |
| BNSF 428247 Condup-grain Brown | Track 4 | grain | | | |
| BNSF 428209 Condup-grain Green | Track 4 | grain | | | |
| BNSF 473016 Condup-grain Brown | Track 4 | grain | | | |
| GMK 249120 Coll. etc. Grey | Track 1 | steel | | | |
| GMK 1108 Gon-a-crap Black | Track 1 | empty | | | |
| BNSF 311476 Gon-a-crap Red | Track 1 | empty | | | |
| BNSF 312030 Gon-a-crap Black | Track 1 | empty | | | |
| TLIN 8822 Condup-grain Yellow | Track 4 | grain | | | |
| ACRF 15001 Train-Main White | Track 1-2 | empty | | | |

Train departs PR (e.g. tracking East with 16 cars (3 Loads, 7 Empty), 854 tons, 1110 tons - Departure Time is 04:57

The following (Locals) have no Work

| Locals | Time |
|---------------|------|
| PR East 06:12 | |

| "BNSF Kootenai River sub" | | | | | | |
|---|------------------|---|------------|--------------|-----------------|--------------------|
| | | Manifest for 803 Printed on 1/18/2015 Validated on 2/4/2020 21:14 | | | | |
| *Potion Mill work* | | | | | | |
| Scheduled work in Potions, and departs at 08:00 | | | | | | |
| PICKUPS | | | | SETOUTS | | |
| CAR | LOCATION | LOAD | | CAR | LOCATION | LOAD |
| (1) PPS 10 | SI | Engine service | Steel | Deodar 810 | | |
| PPS 9008 | SI | Engine service | Steel | Deodar 810 | | |
| MC 21849 | Box AC Hanson | craft Paper | empty | M MC 21849 | Box AC Hanson | Finish 2 |
| HS 458319 | Box AC Brown | OFF spool | empty | M HS 458319 | Box AC Brown | Finish 2 |
| GI 174221 | Woodchip Blue | | | | | |
| GI 174224 | Woodchip Blue | | | | | |
| MSM 278141 | Woodchip Brown | | | | | |
| MSM 715097 | Box Brown | | | | | |
| MSM 721224 | Box AC Brown | | | | | |
| (2) DTL 392288 | Pack-prop Black | | | | | |
| GAC 3243 | CovGrpmt Gray | | | | | |
| GAC 3285 | CovGrpmt Gray | | | | | |
| GME 22068 | CovGrpmt Gray | | | | | |
| BI 443716 | CovGrpmt Gray | | | | | |
| MSM 715097 | Box Brown | | | | | |
| HS 458448 | Box AC Brown | | | | | |
| SSM 25123 | Box Hanson | | | | | |
| HAF 604834 | Box AC Black | | | | | |
| MSM 715097 | Box Brown | | | | | |
| ACFX 78774 | Two-Kanlan White | | | | | |
| 1.Loom08b | | | | | | |
| 2.Loom08b | | | | | | |
| *HAZARDOUS | | | | | | |
| Train departs Potions traveling West with 18 cars (14 Loads, 12 Empty, 877 net, 728 tons - Departure Time is 08:00) | | | | | | |
| Scheduled work in Troy, GI. Train arrives at 08:16 and departs at 08:40 | | | | | | |
| *Potion finish overflow cars can be spotted on either track 1 or 2* | | | | | | |
| PICKUPS | | | | SETOUTS | | |
| CAR | LOCATION | LOAD | | CAR | LOCATION | LOAD |
| ACFX 81824 | CovGrpmt White | Tabouret-3 | empty | M ACFX 81824 | CovGrpmt White | Power plant Flyash |
| BI 816008 | Woodchip Green | | w. chips | GI 174221 | Woodchip Blue | |
| BI 816026 | Woodchip Green | | w. chips | GI 174224 | Woodchip Blue | |
| MSM 241434 | Woodchip Brown | | w. chips | MSM 278141 | Woodchip Brown | |
| BI 587602 | Woodchip Green | | w. chips | MSM 715097 | Box Brown | |
| BI 587643 | Woodchip Green | | w. chips | MSM 721224 | Box AC Brown | |
| BI 3501 | CovGrpmt Green | | wood | DTL 392288 | Pack-prop Black | |
| HS 443241 | Box AC Blue | | left paper | GAC 3243 | CovGrpmt Gray | |
| HS 426724 | Box AC Blue | | left paper | GAC 3285 | CovGrpmt Gray | |
| HS 459382 | Box AC Brown | | left paper | GME 22068 | CovGrpmt Gray | |
| HAF 604834 | Box AC Brown | | left paper | BI 443716 | CovGrpmt Gray | |
| ACFX 72850 | Two-Kanlan White | | wool | MSM 715097 | Box Brown | |
| MC 38230 | Pulp Black | | pulp | HS 459448 | Box AC Brown | |
| TRM 82040 | Pulp Yellow | | pulp | SSM 25123 | Box Hanson | |
| DTM 13 | Imp-Pulp Yellow | | wool | HAF 604834 | Box AC Black | |
| BI 302870 | Box Black | | empty | MSM 715097 | Box Brown | |
| *HAZARDOUS | | | | | | |
| Train departs Troy GI traveling West with 18 cars (14 Loads, 1 Empty, 882 net, 1142 tons - Departure Time is 08:40) | | | | | | |

This is the same Manifest as the Manifest with Default Settings above for Train 1000. The only difference here is that the Form Preferences for Border Area have been changed. The difference is obvious.

This is the same Manifest as the Manifest with Default Settings above for Train 803. The only difference here is that the Form Preferences for Border Area have been changed. The difference is obvious.

Now let's combine to two changes that we made. One for the Car PICKUP/SETOUT Colors and two for the Border Area Colors Using the same two CSV File as in Appendix A, but with both changes to Preferences. The results appear below. Review the Preference Settings for the previous examples to check the settings.

| "BNSF Kootenai River sub" | | | | | | | | | |
|---|------------|---|-----------|-----------|----------|--------------|--|--|--|
| | | Manifest for 1000 "Kootenai River sub" Validated on 10/7/2010 22:00 | | | | | | | |
| "Kootenai River and KRID UP turn" | | | | | | | | | |
| Scheduled work in Spokane - and departs at 05:15 | | | | | | | | | |
| PICKUPS | | | SETOUTS | | | | | | |
| | CAR | LOCATION | LOAD | CAR | LOCATION | LOAD | | | |
| (1) | SP 4199 | GRD 2000 | Track 1 | steel | Decade | Andrea 4 255 | | | |
| | WLS 4008 | Coal wtd Orange | Track 1 | U-steel | | | | | |
| | WLS 47283 | Condy-grain Brown | Track 1 | p-pallets | | | | | |
| | GRW 50549 | Coal Black | Track 1 | empty | | | | | |
| (2) | SP 1493 | Caboose Yellow | Track 1 | crew | | | | | |
| | L.Loomoobe | | | | | | | | |
| | L.Caboose | | | | | | | | |
| Train departs Spokane traveling East with 3 cars (2 Loads, 1 Empty, 273 tons - Departure Time is 05:15) | | | | | | | | | |
| The following locations have no work | | | | | | | | | |
| Yardley Jul 03:30 Tul 03:40 Houser 04:00 Ramsay 04:15 Folsom 04:30 | | | | | | | | | |
| Scheduled work in RR Bldg - Train arrives at 06:15 and departs at 06:27 | | | | | | | | | |
| "HELPFUL HINT" The RR Bldg area is on both sides of the aisle. We at the site plant first so you can build your outbound trains there. The arrival track needs to be open for other trains that work the interchange" | | | | | | | | | |
| PICKUPS | | | SETOUTS | | | | | | |
| | CAR | LOCATION | LOAD | CAR | LOCATION | LOAD | | | |
| | BNSF 72494 | Box Brown | Track 1 | plating | | | | | |
| | BNSF 22122 | Box Blue Yellow | Track 1 | empty | | | | | |
| | BNSF 40024 | Condy-grain Black | Track 1 | empty | | | | | |
| | BNSF 42384 | Condy-grain Brown | Track 4 | grain | | | | | |
| | BNSF 42318 | Condy-grain Green | Track 4 | grain | | | | | |
| | BNSF 47314 | Condy-grain Brown | Track 4 | grain | | | | | |
| | CM 24910 | Coal wtd Gray | Track 1 | U-steel | | | | | |
| | JMFX 199 | Condy-grain Black | Track 1 | empty | | | | | |
| | BNSF 51476 | Condy-grain Red | Track 1 | empty | | | | | |
| | BNSF 51230 | Condy-grain Black | Track 1 | empty | | | | | |
| | TLCK 882 | Condy-grain Yellow | Track 4 | grain | | | | | |
| | ACFX 1507 | Train-Kanlan White | Track 1-2 | empty | | | | | |
| Train departs RR Bldg traveling East with 10 cars (4 Loads, 7 Empty, 664 tons - Departure Time is 06:27) | | | | | | | | | |
| The following locations have no work | | | | | | | | | |
| RR East 06:12 | | | | | | | | | |

| "BNSF Kootenai River sub" | | | | | | | | | |
|--|------------|--|----------------|-------|------------|--------------------|--------------------|------------|-------|
| | | Manifest for 803 "Potlatch Mill job" Validated on 2/4/2010 21:14 | | | | | | | |
| "Potlatch Mill work" | | | | | | | | | |
| Scheduled work in Potlatch - and departs at 08:00 | | | | | | | | | |
| PICKUPS | | | SETOUTS | | | | | | |
| | CAR | LOCATION | LOAD | CAR | LOCATION | LOAD | | | |
| (1) | PPS 30 | SI | Engine service | steel | Decade | 810 | | | |
| (2) | PPS 3008 | SI | Engine service | steel | Decade | 810 | | | |
| | HC 2149 | Box SC Maroon | Stacks Paper | empty | M | HC 2149 | Box SC Maroon | Flatland 2 | empty |
| | HS 65519 | Box SC Brown | Off spot | empty | M | HS 65519 | Box SC Brown | Flatland 2 | empty |
| | GI 17422 | Woodchip Blue | empty | | | | | | |
| | GI 17424 | Woodchip Blue | empty | | | | | | |
| | MTLW 27641 | Woodchip Brown | empty | | | | | | |
| | BNSF 71397 | Box Brown | paper | | | | | | |
| | BNSF 72124 | Box SC Brown | paper | | | | | | |
| (3) | DTLK 30238 | Train-prop Black | empty | | | | | | |
| | CMK 3243 | Condy-grain Gray | empty | | | | | | |
| | CMK 3252 | Condy-grain Gray | empty | | | | | | |
| | DM 23945 | Condy-grain Gray | empty | | | | | | |
| | BI 44174 | Condy-grain Gray | empty | | | | | | |
| | BNSF 71307 | Box Brown | paper | | | | | | |
| | BI 45944 | Box SC Brown | paper | | | | | | |
| | SGM 25123 | Box Maroon | empty | | | | | | |
| | DM 62434 | Box SC Black | empty | | | | | | |
| | BNSF 71303 | Box Brown | empty | | | | | | |
| | ACFX 7874 | Train-Kanlan White | empty | | | | | | |
| | L.Loomoobe | | | | | | | | |
| | L.HANDCARR | | | | | | | | |
| Train departs Potlatch traveling West with 16 cars (14 Loads, 1 Empty, 872 tons - Departure Time is 08:00) | | | | | | | | | |
| Scheduled work in Troy job - Train arrives at 08:10 and departs at 08:40 | | | | | | | | | |
| "Potlatch North yard cars can be loaded on either track 1 or 2" | | | | | | | | | |
| PICKUPS | | | SETOUTS | | | | | | |
| | CAR | LOCATION | LOAD | CAR | LOCATION | LOAD | | | |
| | ACFX 31024 | Condy-grain White | Subroad-2 | M | ACFX 31024 | Condy-grain White | Power plant Flyash | empty | |
| | BI 51600 | Woodchip Green | w- chips | | GI 17422 | Woodchip Blue | | empty | |
| | BI 51606 | Woodchip Green | w- chips | | GI 17424 | Woodchip Blue | | empty | |
| | BNSF 24143 | Woodchip Brown | w- chips | | MTLW 27641 | Woodchip Brown | | empty | |
| | BI 51760 | Woodchip Green | w- chips | | BNSF 71397 | Box Brown | | paper | |
| | BI 58743 | Woodchip Green | w- chips | | BNSF 72124 | Box SC Brown | | paper | |
| | BI 5901 | Condy-grain Green | wood | | DTLK 30238 | Train-prop Black | | empty | |
| | VCJ 15294 | Box SC Blue | lft.papers | | CMK 3243 | Condy-grain Gray | | empty | |
| | HS 45878 | Box SC Blue | lft.papers | | CMK 3252 | Condy-grain Gray | | empty | |
| | HS 45843 | Box SC Brown | lft.papers | | DM 23945 | Condy-grain Gray | | empty | |
| | DM 50434 | Box SC Brown | lft.papers | | BI 44174 | Condy-grain Gray | | empty | |
| | ACFX 7100 | Train-Kanlan White | empty | | BNSF 71307 | Box Brown | | paper | |
| | HC 38050 | Pulp Black | pulp | | HS 45944 | Box SC Brown | | paper | |
| | TPP 82740 | Pulp Yellow | pulp | | SGM 25123 | Box Maroon | | empty | |
| | DM 11 | Box Brown Yellow | wood | | DM 62434 | Box SC Black | | empty | |
| | BI 32517 | Coal Black | empty | | BNSF 71303 | Box Brown | | empty | |
| | | | | | ACFX 7874 | Train-Kanlan White | | empty | |
| Train departs Troy job traveling West with 16 cars (14 Loads, 1 Empty, 857 tons - Departure Time is 08:40) | | | | | | | | | |

As shown, you can come up with some really strange combinations. In most

As shown, you can come up with some really strange color

cases, the default values will suffice.

combinations. In most cases, the default values will suffice.

APPENDIX C: OUTPUT PREFERENCES EXAMPLES [\(Return\)](#)

Using the same two CSV Files as in Appendix A, lets change one of the Output Options Preferences, namely Print Lines. Let's set the Print Lines to NO. The results appear below. First a look at the Preference Settings.

| OUTPUT OPTIONS | | | |
|------------------|-----|--------------------|-----|
| PICKUP BLOCKING | YES | PAGE BREAKS | YES |
| PRINT COMMENTS | YES | INCLUDE TIMES | YES |
| EXT. CAR DESC | YES | LINES PER PAGE | 66 |
| EXT. TRK. DESC | YES | PRINT CAR COLOR | YES |
| PAGE HEADINGS | YES | FIXED WIDTH FONT | YES |
| PRINT LOADS | YES | BOLD CAR INFO | YES |
| MULTI-LINE DELIM | / | 8 PT FONT | YES |
| PRINT PREVIEW | YES | PRINT LINES | YES |
| PRINT HARDCOPY | NO | SAVE MANIFEST FILE | NO |
| PRINT CREW LINE | NO | | |

"BNSF Kootenai River sub"

Manifest for 1000
11:45:00 (RS:PO: LUP)
Validated on 10/7/2010 22:00

"Kootenai River and KRID UP Turn"

Scheduled work in Spokane - and departs at 03:16

| | CAR | PICKUP \$ | LOCATION | LOAD | CAR | SETOUTS | LOCATION | LOAD |
|-----|-------------|------------|------------------|--------------|-----------------------|---------|----------|------|
| [1] | SP 4098 | GP20 2000 | Track 1 | steel | Decoder Address 4 028 | | | |
| | BALS 6009 | Coal stl. | Orange Track 1 | c.steel | | | | |
| | MLDX 97282 | Coal&grain | YS Brown Track 1 | p.pellets | | | | |
| | GDNC 301039 | Coal Black | Track 1 | empty | | | | |
| [2] | UP 24501 | Coal&grain | Yellow Track 1 | coal | | | | |
| | | | | 1.Locomotive | | | | |
| | | | | 2.Coach | | | | |

Train departs Spokane traveling East with 2 Loads, 2 Loads, 1 Empty, 873 Red, 578 tons - Departure Time 10:05:16

The following (empty) have No Work

Yard on pt 03:00
Inn 03:46
Hwy 04:00
Rmwy 04:16
Ft on pt 04:30

Scheduled work in KR Rly - Train arrives at 06:46 and departs at 04:67

"HELPFUL HINT # The KR ID area is on both sides of the aisle
We'll be the first to you can build your outboard train there.
The arrival track needs to be open for other trains that work the interchange."

| | CAR | PICKUP \$ | LOCATION | LOAD | CAR | SETOUTS | LOCATION | LOAD |
|--|-------------|----------------|-----------------------|---------|-----|---------|----------|------|
| | BNSF 124954 | Box Brown | Track 1 | empty | | | | |
| | FGSR 191700 | Box 2ns Yellow | Track 1 | empty | | | | |
| | BNSF 580926 | Coal&grain | Black Track 1 | empty | | | | |
| | BNSF 423647 | Coal&grain | Brown Track 4 | grain | | | | |
| | BNSF 428308 | Coal&grain | Green Track 4 | grain | | | | |
| | BNSF 473016 | Coal&grain | Brown Track 4 | grain | | | | |
| | DMF 349030 | Coal stl. | Gray Track 1 | c.steel | | | | |
| | JRFX 1395 | Coal&grain | Black Track 1 | empty | | | | |
| | BNSF 51476 | Coal&grain | Red Track 1 | empty | | | | |
| | BNSF 51030 | Coal&grain | Black Track 1 | empty | | | | |
| | TLCH 8822 | Coal&grain | Yellow Track 4 | grain | | | | |
| | ACFX 13007 | Track | Black&White Track 1-2 | empty | | | | |

Train departs KR Rly traveling East with 16 Cars (8 Loads, 7 Empties), 864 feet, 1113 tons - Departure Time 04:67

The following (empty) have No Work

KR East 06:12

"BNSF Kootenai River sub"
Manifest for 803
Station 118303
Validated on 2/4/2020 21:14

"Polatch Mill work"

Scheduled work in Polatch - and departs at 08:00

| PICKUPS | LOCATION | LOAD | SETOUTS | CAR | LOCATION | LOAD |
|-------------------------------|----------------|---------|--------------------------|----------|----------|------|
| TT 275 10 S1 | Engine service | Classed | December #10 | | | |
| TT 275 9008 S1 | Engine service | Classed | December #10 | | | |
| MC 21549 Box AC Haroon | Kraft Paper | empty | M MC 21549 Box AC Haroon | Finish 2 | empty | |
| HS 52519 Box AC Brown | OSF work | empty | M HS 52519 Box AC Brown | Finish 2 | empty | |
| GP 174221 Woodchip Blue | | empty | | | | |
| GP 174224 Woodchip Blue | | empty | | | | |
| MLM 276141 Woodchip Brown | | paper | | | | |
| BWSF 713987 Box Brown | | paper | | | | |
| BWSF 727124 Box AC Brown | | paper | | | | |
| OTM 350288 Tank-prop Black | | empty | | | | |
| GACX 2243 Cordeprant Gray | | empty | | | | |
| GACX 2252 Cordeprant Gray | | empty | | | | |
| DMG 22045 Cordeprant Gray | | empty | | | | |
| BP 441716 Cordeprant Gray | | empty | | | | |
| BWSF 713037 Box Brown | | paper | | | | |
| HS 459448 Box AC Brown | | paper | | | | |
| ESAM 22123 Box Haroon | | empty | | | | |
| HAM 804234 Box AC Black | | empty | | | | |
| BWSF 713039 Box Brown | | empty | | | | |
| ACFX 78074 Tank-kaoilin White | | empty | | | | |
| 1-LOCOMOTIVE | | | | | | |
| 2-LOCOMOTIVE | | | | | | |
| 3-LOCOMOTIVE | | | | | | |

Train departs Polatch traveling East with 18 cars (4 Loads, 12 Empty, 8731net, 729 tons - Departure Time is 08:00

Scheduled work in Troy Jct. Train arrives at 08:16 and departs at 08:48
"Polatch finish overflow cars can be spotted on either track 1 or 2"

| PICKUPS | LOCATION | LOAD | SETOUTS | CAR | LOCATION | LOAD |
|-------------------------------|-----------|-----------|-------------------------------|--------------------|----------|------|
| ACFX 51924 Cordeprant White | Inbound-1 | empty | M ACFX 51924 Cordeprant White | Power plant flyash | empty | |
| BP 35000 Woodchip Green | | w.chips | GP 174221 Woodchip Blue | | empty | |
| BP 35006 Woodchip Green | | w.chips | GP 174224 Woodchip Blue | | empty | |
| BWSF 243424 Woodchip Brown | | w.chips | MLM 276141 Woodchip Brown | | empty | |
| BP 297602 Woodchip Green | | w.chips | BWSF 713987 Box Brown | | paper | |
| BP 297643 Woodchip Green | | w.chips | BWSF 727124 Box AC Brown | | paper | |
| BP 2981 Cordeprant Green | | acid | OTM 350288 Tank-prop Black | | empty | |
| VCS 132947 Box AC Blue | | kft.paper | GACX 2243 Cordeprant Gray | | empty | |
| HS 459724 Box AC Blue | | kft.paper | GACX 2252 Cordeprant Gray | | empty | |
| HS 459524 Box AC Brown | | kft.paper | DMG 22045 Cordeprant Gray | | empty | |
| HAM 804234 Box AC Brown | | kft.paper | BP 441716 Cordeprant Gray | | empty | |
| ACFX 79380 Tank-kaoilin White | | kaoilin | BWSF 713037 Box Brown | | paper | |
| MC 35030 Pulp Black | | pulp | HS 459448 Box AC Brown | | paper | |
| OTM 35040 Pulp Yellow | | pulp | ESAM 22123 Box Haroon | | empty | |
| YCS 13 Impress Yellow | | rub | HAM 804234 Box AC Black | | empty | |
| BP 201870 Gen Black | | empty | BWSF 713039 Box Brown | | empty | |
| | | | ACFX 78074 Tank-kaoilin White | | empty | |

Train departs Troy Jct traveling West with 16 cars (14 Loads, 1 Empty), 843net, 1242 tons - Departure Time is 08:48

This Manifest is identical to that in Appendix A except that the Output Options Preference No Lines is changed from YES to NO. The difference is obvious. The major reason for this Preference is to reduce ink usage and print time.

This Manifest is identical to that in Appendix A except that the Output Options Preference No Lines is changed from YES to NO. The difference is obvious. The major reason for this Preference is to reduce ink usage and print time.

APPENDIX D: LOGO SELECTION EXAMPLES [\(Return\)](#)

Using the same two CSV Files as in Appendix A, lets change the Logo File Setting. The results appear below. First a look at the Preference Settings.

| FILE TYPE | FILE LOCATION/NAME |
|--------------------------|--|
| CSV MANIFEST INPUT FILE: | |
| MANIFEST OUTPUT FILE: | |
| MANIFEST LOGO FILE: | C:\Users\Dan\JMRI\OPERATIONS\CSV\MANIFESTS\LOGOS\BMWLogo.jpg |
| MANIFEST LOG FILE: | |
| CSV FILE OF FILES FILE: | |

"BNSF Kootenai River sub"

Manifest for 1000
"L-SPOKRSPO (UP)"
Validated on 10/7/2000 22:00

"Kootenai River and KRIDUP turn"

Scheduled work in Spokane - and departs at 03:16

| | PICKUP \$ | | | SETOUT \$ | | |
|--------------|-------------|------------------|---------|------------|----------|------|
| | CAR | LOCATION | LOAD | CAR | LOCATION | LOAD |
| [1] | SP 4058 | GF20 2000 | Track 1 | Coal | | |
| | BLLK 6009 | Coal stl. Orange | Track 1 | c. steel | | |
| | BLLK 9788 | CovWop-PS Brown | Track 1 | p. pellets | | |
| | SOHN 310129 | Gon Black | Track 1 | empty | | |
| [2] | UP 24501 | Caboose Yellow | Track 1 | crow | | |
| 1-Locomotive | | | | | | |
| 2-Caboose | | | | | | |

Train departs Spokane traveling East with 2 cars (2 Loads, 1 Empty), 273 feet, 376 tons - Departure Time is 03:16

The following town(s) have No Work

| |
|-------------------|
| Yardley Jct 03:30 |
| Irwin 03:46 |
| Hauser 04:00 |
| Remsey 04:16 |
| Foston Jct 04:30 |

Scheduled work in KR Inty - Train arrives at 04:46 and departs at 04:57

"HELPFUL HINT \$ The KFID area is on both sides of the aisle.
Work the tie plant first so you can build your outbound trains there.
The arrival track needs to be open for other trains that work the interchange."

| | PICKUP \$ | | | SETOUT \$ | | |
|-------------|---------------------|-----------|----------|-----------|----------|------|
| | CAR | LOCATION | LOAD | CAR | LOCATION | LOAD |
| BNSF 724954 | Box Brown | Track 1 | plating | | | |
| FGSR 191720 | Box Ins Yellow | Track 1 | empty | | | |
| BNSF 580596 | Gon's scrap Black | Track 1 | empty | | | |
| BNSF 423847 | CovWop-grain Brown | Track 4 | grain | | | |
| BNSF 425508 | CovWop-grain Green | Track 4 | grain | | | |
| BNSF 475016 | CovWop-grain Brown | Track 4 | grain | | | |
| CSW 240150 | Coal stl. Gray | Track 1 | c. steel | | | |
| JEFX 1995 | Gon's scrap Black | Track 1 | empty | | | |
| BNSF 511476 | Gon's scrap Red | Track 1 | empty | | | |
| BNSF 512030 | Gon's scrap Black | Track 1 | empty | | | |
| FLDX 6622 | CovWop-grain Yellow | Track 4 | grain | | | |
| ACFX 73007 | Tank-kaoLin White | Track 1-2 | empty | | | |

Train departs KR Inty traveling East with 16 cars (5 Loads, 7 Empty), 964 feet, 1113 tons - Departure Time is 04:57

The following town(s) have No Work

| |
|---------------|
| KR East 05:12 |
|---------------|

Using the same CSV File seen as the first Manifest in Appendix A, lets change the Logo File Setting to a different Logo file. The results appear below. First a look at the Preference Settings.

| FILE TYPE | FILE LOCATION/NAME |
|--------------------------|--|
| CSV MANIFEST INPUT FILE: | |
| MANIFEST OUTPUT FILE: | |
| MANIFEST LOGO FILE: | C:\Users\Dan\JMRI\operations\csvmanifests\logos\M&S\Logo.BMP |
| MANIFEST LOG FILE: | |
| CSV FILE OF FILES FILE: | |

| M&SE <small>Mainline & Southeastern Railway</small> | "BNSF Kootenai River sub" Manifest for 1000 "L-SPOKRSPO (UP)" Validated on 10/7/2000 22:00 | M&SE <small>Mainline & Southeastern Railway</small> | | | | | | | | | | | | | | | | | | | | | | | | | | | | | | | | | | | | | | | | | | | | | | | | | | | | | | |
|--|---|---|----------|------|-----------------------|---------|---------|----------------------------|---------|---------|-----------------------------|---------|-----------|--------------------------------|---------|-------|--------------------------------|---------|-------|--------------------------------|---------|-------|---------------------------|---------|---------|---|---------|----------|---------------------------|-----------------------|-------|-----------------------------|---------|-------|-------------------------------|---------|-------|------------------------------|-----------|-------|--|-----|----------|------|--|--|--|--|--|--|--|--|--|--|--|--|
| "Kootenai River and KRIDUP turn" | | | | | | | | | | | | | | | | | | | | | | | | | | | | | | | | | | | | | | | | | | | | | | | | | | | | | | | | |
| Scheduled work in Spokane, and departs at 00:16 | | | | | | | | | | | | | | | | | | | | | | | | | | | | | | | | | | | | | | | | | | | | | | | | | | | | | | | | |
| | PICKUPS | SETOUTS | | | | | | | | | | | | | | | | | | | | | | | | | | | | | | | | | | | | | | | | | | | | | | | | | | | | | | |
| | <table border="1" style="width:100%; border-collapse: collapse;"> <thead> <tr> <th>CAR</th> <th>LOCATION</th> <th>LOAD</th> </tr> </thead> <tbody> <tr> <td>SF 4028 GP20 2000</td> <td>Track 1</td> <td>Coal</td> </tr> <tr> <td>BALE 5009 Coil stl. Orange</td> <td>Track 1</td> <td>c.steel</td> </tr> <tr> <td>MLX 97253 CovWop-grn Brown</td> <td>Track 1</td> <td>p.pellets</td> </tr> <tr> <td>COXK 310189 Gon Black</td> <td>Track 2</td> <td>empty</td> </tr> <tr> <td>CP 24801 Caboose Yellow</td> <td>Track 1</td> <td>crew</td> </tr> <tr> <td>1-Locomotive</td> <td></td> <td></td> </tr> <tr> <td>2-Caboose</td> <td></td> <td></td> </tr> </tbody> </table> | CAR | LOCATION | LOAD | SF 4028 GP20 2000 | Track 1 | Coal | BALE 5009 Coil stl. Orange | Track 1 | c.steel | MLX 97253 CovWop-grn Brown | Track 1 | p.pellets | COXK 310189 Gon Black | Track 2 | empty | CP 24801 Caboose Yellow | Track 1 | crew | 1-Locomotive | | | 2-Caboose | | | <table border="1" style="width:100%; border-collapse: collapse;"> <thead> <tr> <th>CAR</th> <th>LOCATION</th> <th>LOAD</th> </tr> </thead> <tbody> <tr> <td>Decoder Address 4 006</td> <td></td> <td></td> </tr> <tr> <td></td> <td></td> <td></td> </tr> <tr> <td></td> <td></td> <td></td> </tr> <tr> <td></td> <td></td> <td></td> </tr> </tbody> </table> | CAR | LOCATION | LOAD | Decoder Address 4 006 | | | | | | | | | | | | | | | | | | | | | | | | | | |
| CAR | LOCATION | LOAD | | | | | | | | | | | | | | | | | | | | | | | | | | | | | | | | | | | | | | | | | | | | | | | | | | | | | | |
| SF 4028 GP20 2000 | Track 1 | Coal | | | | | | | | | | | | | | | | | | | | | | | | | | | | | | | | | | | | | | | | | | | | | | | | | | | | | | |
| BALE 5009 Coil stl. Orange | Track 1 | c.steel | | | | | | | | | | | | | | | | | | | | | | | | | | | | | | | | | | | | | | | | | | | | | | | | | | | | | | |
| MLX 97253 CovWop-grn Brown | Track 1 | p.pellets | | | | | | | | | | | | | | | | | | | | | | | | | | | | | | | | | | | | | | | | | | | | | | | | | | | | | | |
| COXK 310189 Gon Black | Track 2 | empty | | | | | | | | | | | | | | | | | | | | | | | | | | | | | | | | | | | | | | | | | | | | | | | | | | | | | | |
| CP 24801 Caboose Yellow | Track 1 | crew | | | | | | | | | | | | | | | | | | | | | | | | | | | | | | | | | | | | | | | | | | | | | | | | | | | | | | |
| 1-Locomotive | | | | | | | | | | | | | | | | | | | | | | | | | | | | | | | | | | | | | | | | | | | | | | | | | | | | | | | | |
| 2-Caboose | | | | | | | | | | | | | | | | | | | | | | | | | | | | | | | | | | | | | | | | | | | | | | | | | | | | | | | | |
| CAR | LOCATION | LOAD | | | | | | | | | | | | | | | | | | | | | | | | | | | | | | | | | | | | | | | | | | | | | | | | | | | | | | |
| Decoder Address 4 006 | | | | | | | | | | | | | | | | | | | | | | | | | | | | | | | | | | | | | | | | | | | | | | | | | | | | | | | | |
| | | | | | | | | | | | | | | | | | | | | | | | | | | | | | | | | | | | | | | | | | | | | | | | | | | | | | | | | |
| | | | | | | | | | | | | | | | | | | | | | | | | | | | | | | | | | | | | | | | | | | | | | | | | | | | | | | | | |
| | | | | | | | | | | | | | | | | | | | | | | | | | | | | | | | | | | | | | | | | | | | | | | | | | | | | | | | | |
| Train departs Spokane traveling East with 3 cars (2 Loads, 1 Empty), 273 total, 373 tons - Departure Time is 00:16 | | | | | | | | | | | | | | | | | | | | | | | | | | | | | | | | | | | | | | | | | | | | | | | | | | | | | | | | |
| The following town(s) have No Work | | | | | | | | | | | | | | | | | | | | | | | | | | | | | | | | | | | | | | | | | | | | | | | | | | | | | | | | |
| Yardley Jct 00:30 | | | | | | | | | | | | | | | | | | | | | | | | | | | | | | | | | | | | | | | | | | | | | | | | | | | | | | | | |
| Idaho 00:45 | | | | | | | | | | | | | | | | | | | | | | | | | | | | | | | | | | | | | | | | | | | | | | | | | | | | | | | | |
| Houser 06:00 | | | | | | | | | | | | | | | | | | | | | | | | | | | | | | | | | | | | | | | | | | | | | | | | | | | | | | | | |
| Remsey 04:15 | | | | | | | | | | | | | | | | | | | | | | | | | | | | | | | | | | | | | | | | | | | | | | | | | | | | | | | | |
| Foston Jct 04:30 | | | | | | | | | | | | | | | | | | | | | | | | | | | | | | | | | | | | | | | | | | | | | | | | | | | | | | | | |
| Scheduled work in KR Inq - Train arrives at 04:46 and departs at 04:57 | | | | | | | | | | | | | | | | | | | | | | | | | | | | | | | | | | | | | | | | | | | | | | | | | | | | | | | | |
| "HELPFUL HINT" The KR ID area is on both sides of the aisle. Work the tie plant first so you can build your outbound trains there. The arrival track needs to be open for other trains that work the interchange." | | | | | | | | | | | | | | | | | | | | | | | | | | | | | | | | | | | | | | | | | | | | | | | | | | | | | | | | |
| | PICKUPS | SETOUTS | | | | | | | | | | | | | | | | | | | | | | | | | | | | | | | | | | | | | | | | | | | | | | | | | | | | | | |
| | <table border="1" style="width:100%; border-collapse: collapse;"> <thead> <tr> <th>CAR</th> <th>LOCATION</th> <th>LOAD</th> </tr> </thead> <tbody> <tr> <td>BNSF 724054 Box Brown</td> <td>Track 1</td> <td>plating</td> </tr> <tr> <td>BNSF 191720 Box Ins Yellow</td> <td>Track 1</td> <td>empty</td> </tr> <tr> <td>BNSF 550595 Gon-scrap Black</td> <td>Track 1</td> <td>empty</td> </tr> <tr> <td>BNSF 423547 CovWop-grain Brown</td> <td>Track 4</td> <td>grain</td> </tr> <tr> <td>BNSF 428508 CovWop-grain Green</td> <td>Track 4</td> <td>grain</td> </tr> <tr> <td>BNSF 473015 CovWop-grain Brown</td> <td>Track 4</td> <td>grain</td> </tr> <tr> <td>CHW 249150 Coal stl. Gray</td> <td>Track 1</td> <td>c.steel</td> </tr> <tr> <td>JEFX 1995 Gon-scrap Black</td> <td>Track 1</td> <td>empty</td> </tr> <tr> <td>BNSF 511476 Gon-scrap Red</td> <td>Track 1</td> <td>empty</td> </tr> <tr> <td>BNSF 512030 Gon-scrap Black</td> <td>Track 1</td> <td>empty</td> </tr> <tr> <td>TLGX 6822 CovWop-grain Yellow</td> <td>Track 4</td> <td>grain</td> </tr> <tr> <td>ACFX 73007 Tank-carlin White</td> <td>Track 1-2</td> <td>empty</td> </tr> </tbody> </table> | CAR | LOCATION | LOAD | BNSF 724054 Box Brown | Track 1 | plating | BNSF 191720 Box Ins Yellow | Track 1 | empty | BNSF 550595 Gon-scrap Black | Track 1 | empty | BNSF 423547 CovWop-grain Brown | Track 4 | grain | BNSF 428508 CovWop-grain Green | Track 4 | grain | BNSF 473015 CovWop-grain Brown | Track 4 | grain | CHW 249150 Coal stl. Gray | Track 1 | c.steel | JEFX 1995 Gon-scrap Black | Track 1 | empty | BNSF 511476 Gon-scrap Red | Track 1 | empty | BNSF 512030 Gon-scrap Black | Track 1 | empty | TLGX 6822 CovWop-grain Yellow | Track 4 | grain | ACFX 73007 Tank-carlin White | Track 1-2 | empty | <table border="1" style="width:100%; border-collapse: collapse;"> <thead> <tr> <th>CAR</th> <th>LOCATION</th> <th>LOAD</th> </tr> </thead> <tbody> <tr> <td></td> <td></td> <td></td> </tr> <tr> <td></td> <td></td> <td></td> </tr> <tr> <td></td> <td></td> <td></td> </tr> <tr> <td></td> <td></td> <td></td> </tr> </tbody> </table> | CAR | LOCATION | LOAD | | | | | | | | | | | | |
| CAR | LOCATION | LOAD | | | | | | | | | | | | | | | | | | | | | | | | | | | | | | | | | | | | | | | | | | | | | | | | | | | | | | |
| BNSF 724054 Box Brown | Track 1 | plating | | | | | | | | | | | | | | | | | | | | | | | | | | | | | | | | | | | | | | | | | | | | | | | | | | | | | | |
| BNSF 191720 Box Ins Yellow | Track 1 | empty | | | | | | | | | | | | | | | | | | | | | | | | | | | | | | | | | | | | | | | | | | | | | | | | | | | | | | |
| BNSF 550595 Gon-scrap Black | Track 1 | empty | | | | | | | | | | | | | | | | | | | | | | | | | | | | | | | | | | | | | | | | | | | | | | | | | | | | | | |
| BNSF 423547 CovWop-grain Brown | Track 4 | grain | | | | | | | | | | | | | | | | | | | | | | | | | | | | | | | | | | | | | | | | | | | | | | | | | | | | | | |
| BNSF 428508 CovWop-grain Green | Track 4 | grain | | | | | | | | | | | | | | | | | | | | | | | | | | | | | | | | | | | | | | | | | | | | | | | | | | | | | | |
| BNSF 473015 CovWop-grain Brown | Track 4 | grain | | | | | | | | | | | | | | | | | | | | | | | | | | | | | | | | | | | | | | | | | | | | | | | | | | | | | | |
| CHW 249150 Coal stl. Gray | Track 1 | c.steel | | | | | | | | | | | | | | | | | | | | | | | | | | | | | | | | | | | | | | | | | | | | | | | | | | | | | | |
| JEFX 1995 Gon-scrap Black | Track 1 | empty | | | | | | | | | | | | | | | | | | | | | | | | | | | | | | | | | | | | | | | | | | | | | | | | | | | | | | |
| BNSF 511476 Gon-scrap Red | Track 1 | empty | | | | | | | | | | | | | | | | | | | | | | | | | | | | | | | | | | | | | | | | | | | | | | | | | | | | | | |
| BNSF 512030 Gon-scrap Black | Track 1 | empty | | | | | | | | | | | | | | | | | | | | | | | | | | | | | | | | | | | | | | | | | | | | | | | | | | | | | | |
| TLGX 6822 CovWop-grain Yellow | Track 4 | grain | | | | | | | | | | | | | | | | | | | | | | | | | | | | | | | | | | | | | | | | | | | | | | | | | | | | | | |
| ACFX 73007 Tank-carlin White | Track 1-2 | empty | | | | | | | | | | | | | | | | | | | | | | | | | | | | | | | | | | | | | | | | | | | | | | | | | | | | | | |
| CAR | LOCATION | LOAD | | | | | | | | | | | | | | | | | | | | | | | | | | | | | | | | | | | | | | | | | | | | | | | | | | | | | | |
| | | | | | | | | | | | | | | | | | | | | | | | | | | | | | | | | | | | | | | | | | | | | | | | | | | | | | | | | |
| | | | | | | | | | | | | | | | | | | | | | | | | | | | | | | | | | | | | | | | | | | | | | | | | | | | | | | | | |
| | | | | | | | | | | | | | | | | | | | | | | | | | | | | | | | | | | | | | | | | | | | | | | | | | | | | | | | | |
| | | | | | | | | | | | | | | | | | | | | | | | | | | | | | | | | | | | | | | | | | | | | | | | | | | | | | | | | |
| Train departs KR Inq traveling East with 15 cars (8 Loads, 7 Empties), 864 feet, 1112 tons - Departure Time is 04:57 | | | | | | | | | | | | | | | | | | | | | | | | | | | | | | | | | | | | | | | | | | | | | | | | | | | | | | | | |
| The following town(s) have No Work | | | | | | | | | | | | | | | | | | | | | | | | | | | | | | | | | | | | | | | | | | | | | | | | | | | | | | | | |
| KR East 06:12 | | | | | | | | | | | | | | | | | | | | | | | | | | | | | | | | | | | | | | | | | | | | | | | | | | | | | | | | |

You may also set the Logo File Setting in JMRI and it becomes part of the CSV Manifest file. If MC sees a Logo record in the file, it will override all other logo settings and use the one specified in the CSV file. If that logo cannot be found, the default logo will be used.

NOTE: If you are using Excel 2007 in Windows, MC will not handle logos. This is due to some decision made in Redmond, Washington, where Bill Gates and his team reside. For some reason they decided to handle the massaging of graphic files in this version differently than in previous version and in newer versions. I think they might have found the error of their ways. If you do want to use your own logo on your manifests, you can do it. At this point it would be best to send me a note and I will work through it with you.

APPENDIX E: ADDITIONAL USER SUGGESTED MANIFEST FORMAT [\(Return\)](#)

Thanks to user, "Steve Davis", MC will soon come in a different flavor. The manifest below is a rendering of what this manifest will look like. The concept here is that the manifest can be folded in half, with Pickups and Setouts on the same side of each half. This manifest will then fit neatly in a shirt pocket or pants back pocket. This will free up another hand to use for running the railroad. This is currently under development. An announcement will be made when this new format is available. It is hoped that the same Preferences that come with the current MC will be available for this new format. There will be a few exceptions due to the half page concept as in certain situations, MC uses both sides of the form for the same car. Blocking and Car Moves are two examples.

| KCS Manifest & Switch List, Page 1 | | | | KCS Manifest & Switch List, Page 2 | | | |
|---|--------|----------------------------------|---|--------------------------------------|--------|-------|--------------|
| SWITCH CARS CAREFULLY AND SAFELY | | | | SWITCH CARS CAREFULLY AND SAFELY | | | |
| AVOID ROUGH HANDLING | | | | AVOID ROUGH HANDLING | | | |
| Lead Engine: | | Train: | | RM | | Track | |
| 0796 | | WVD "Westville Dodger" | | SPFE | 459693 | 008 | Canning |
| Departs: | | Origin: | | Depart Stilwell NB, 442', 6 cars | | | |
| 8:20 | | Sallisaw | | Westville Pickups: | | | |
| Originate Sallisaw, set out Marble City cars on storage track outbound, turn at Westville, MC pickups from storage track on return. | | | | WP | 712183 | 002 | Cargill |
| | | | | Westville Setouts: | | | |
| RM | No. | Track (Destination for blocking) | X | GATX | 73127 | 002 | Cargill |
| Manifest Leaving Sallisaw | | | | FLIX | 2635 | 003 | Hampton Feed |
| DRGW | 18347 | (Marble City) | | KCS | 5323 | 003 | Hampton Feed |
| KCS | 29900 | (Marble City) | | GACX | 56354 | 003 | Hampton Feed |
| ACFX | 64249 | (Marble City) | | CNW | 490032 | 101 | Hudson Farms |
| ATSF | 82286 | (Marble City) | | Depart Westville NB, 222', 2 cars | | | |
| CHT | 200440 | (Marble City) | | Stilwell Pickups: | | | |
| SP | 400089 | (Marble City) | | KCS | 753412 | 007 | Warehouse |
| SP | 401290 | (Marble City) | | WP | 12082 | 006 | Feedmill |
| BN | 430144 | (Marble City) | | GATX | 91381 | 006 | Feedmill |
| FEIX | 103 | (Stilwell) | | Depart Stilwell SB, 368', 5 cars | | | |
| KCS | 113526 | (Stilwell) | | Marble City Pickups: | | | |
| SPFE | 459693 | (Stilwell) | | PLCX | 991 | | Lime Loader |
| GATX | 73127 | (Westville) | | GN | 73976 | | Lime Loader |
| FLIX | 2635 | (Westville) | | SLSF | 78465 | | Lime Loader |
| KCS | 5323 | (Westville) | | BN | 441716 | | Lime Loader |
| GACX | 56354 | (Westville) | | KCS | 5134 | | Lime Loader |
| CNW | 490032 | (Westville) | | SLSF | 89022 | | Lime Loader |
| KCS | 400 | (Sallisaw) | | SP | 402117 | | Lime Loader |
| Depart Sallisaw NB, 968', 17 cars | | | | SP | 490199 | | Lime Loader |
| Marble City Setouts: | | | | Depart Marble City SB, 694', 13 cars | | | |
| DRGW | 18347 | Lime Loader | | Off Duty at: Sallisaw | | | |
| KCS | 29900 | Lime Loader | | | | | |
| ACFX | 64249 | Lime Loader | | | | | |
| ATSF | 82286 | Lime Loader | | | | | |
| CHT | 200440 | Lime Loader | | | | | |
| SP | 400089 | Lime Loader | | | | | |
| SP | 401290 | Lime Loader | | | | | |
| BN | 430144 | Lime Loader | | | | | |
| Depart Marble City NB, 614', 9 cars | | | | | | | |
| Stilwell Setouts: | | | | | | | |
| FEIX | 103 | 006 Feedmill | | | | | |
| KCS | 113526 | 008 Canning | | | | | |

User Suggested Form from "Steve Davis"

This page intentionally left blank